

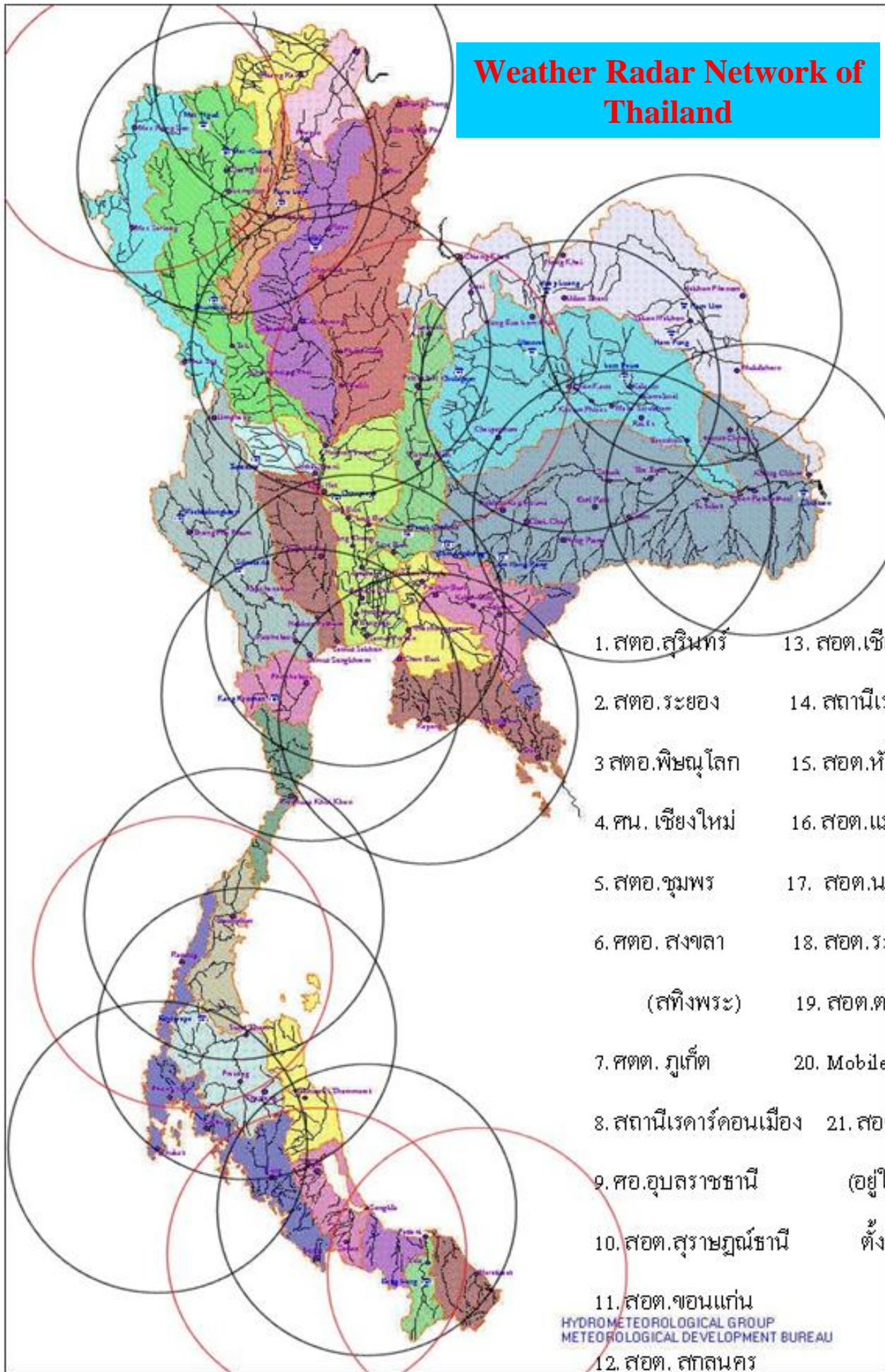
Research and Observation facilities of Thailand

S. BAIMOUNG

*Thai Meteorological Department
4353 Sukhumvit Rd., Bang Na, Bangkok 10260,
THAILAND*

*Email: somchaib@tmd.go.th,
somchaibm_97@metnet.tmd.go.th*

Weather Radar Network of Thailand

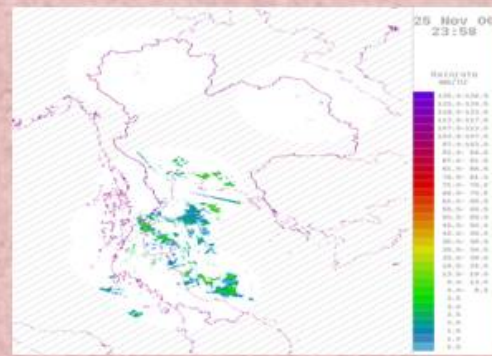
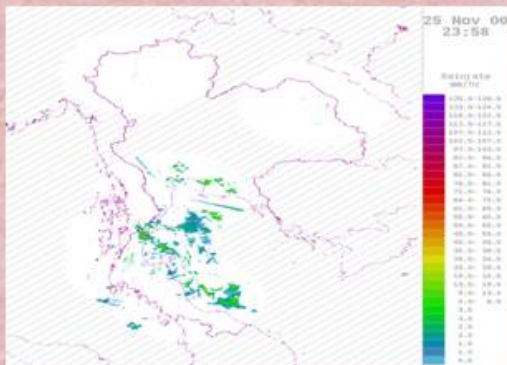
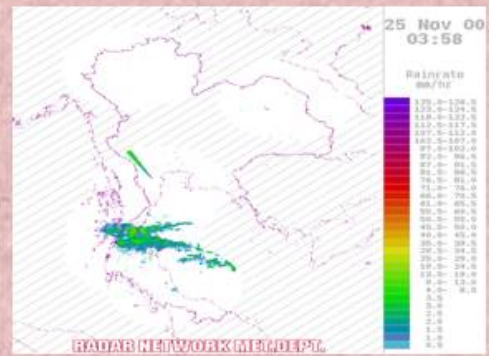
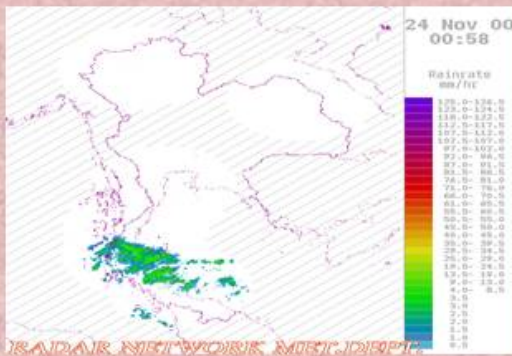


- | | |
|------------------------|------------------------|
| 1. สอต.สุรินทร์ | 13. สอต.เชียงใหม่ |
| 2. สอต.ระยอง | 14. สถานีเรดาร์กรุงเทพ |
| 3 สอต.พิษณุโลก | 15. สอต.หัวหิน |
| 4. คณ. เชียงใหม่ | 16. สอต.แม่ฮ่องสอน |
| 5. สอต.ชุมพร | 17. สอต.นราธิวาส |
| 6. สอต. สงขลา | 18. สอต.ระนอง |
| (สทิงพระ) | 19. สอต.ตรัง |
| 7. สอต. ภูเก็ต | 20. Mobile Radar |
| 8. สถานีเรดาร์คอนเมือง | 21. สอต.เพชรบูรณ์ |
| 9. คอ.อุบลราชธานี | (อยู่ในระหว่างขอ |
| 10. สอต.สุราษฎร์ธานี | ตั้งงบประมาณ) |
| 11. สอต.ขอนแก่น | |
| 12. สอต. สตลนคร | |

HYDROMETEOROLOGICAL GROUP
METEOROLOGICAL DEVELOPMENT BUREAU

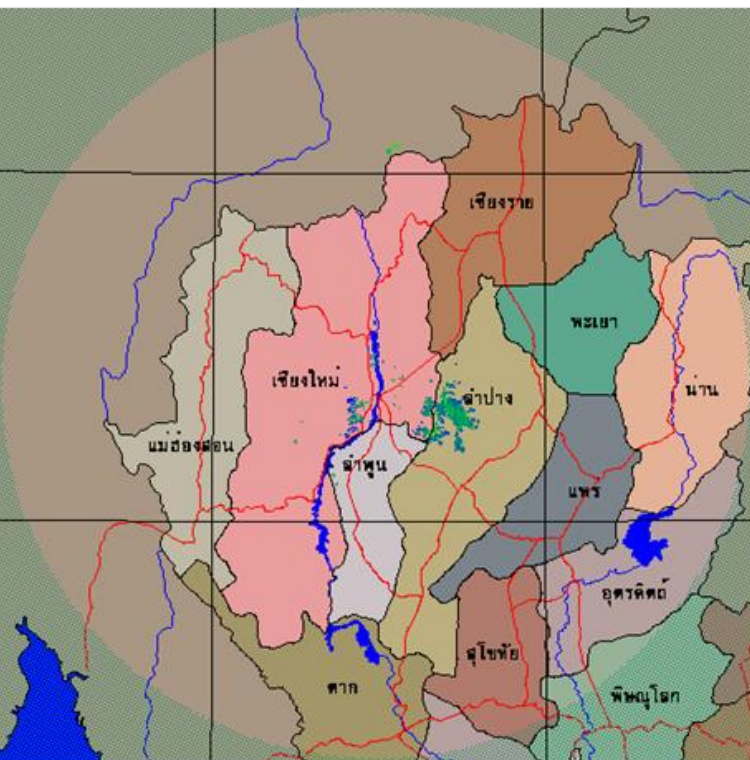
Conventional Weather Radar Products

Radar Imageries

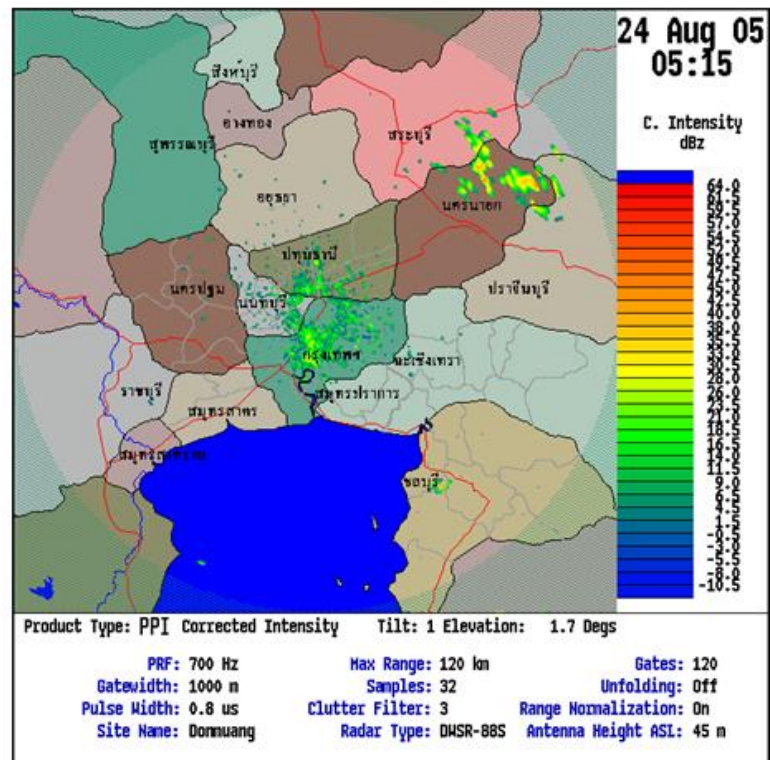


2. Radar Products

For these products, which will be consisted of 14 sites such as;



Chiang Mai



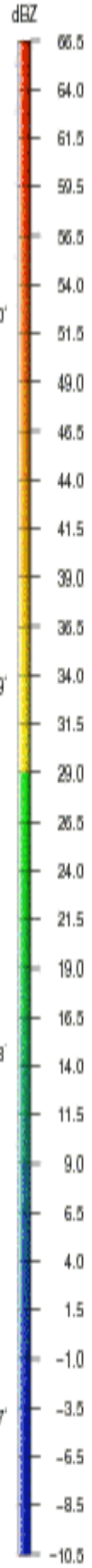
Don Maung, Bangkok

New Weather Radar Products during experimental process

97' 98' 99' 100' 101'

TMD Radar image from: Chiang Mai
1216 UTC 12/05/2006

Base Reflectivity



20'

20'

19'

19'

18'

18'

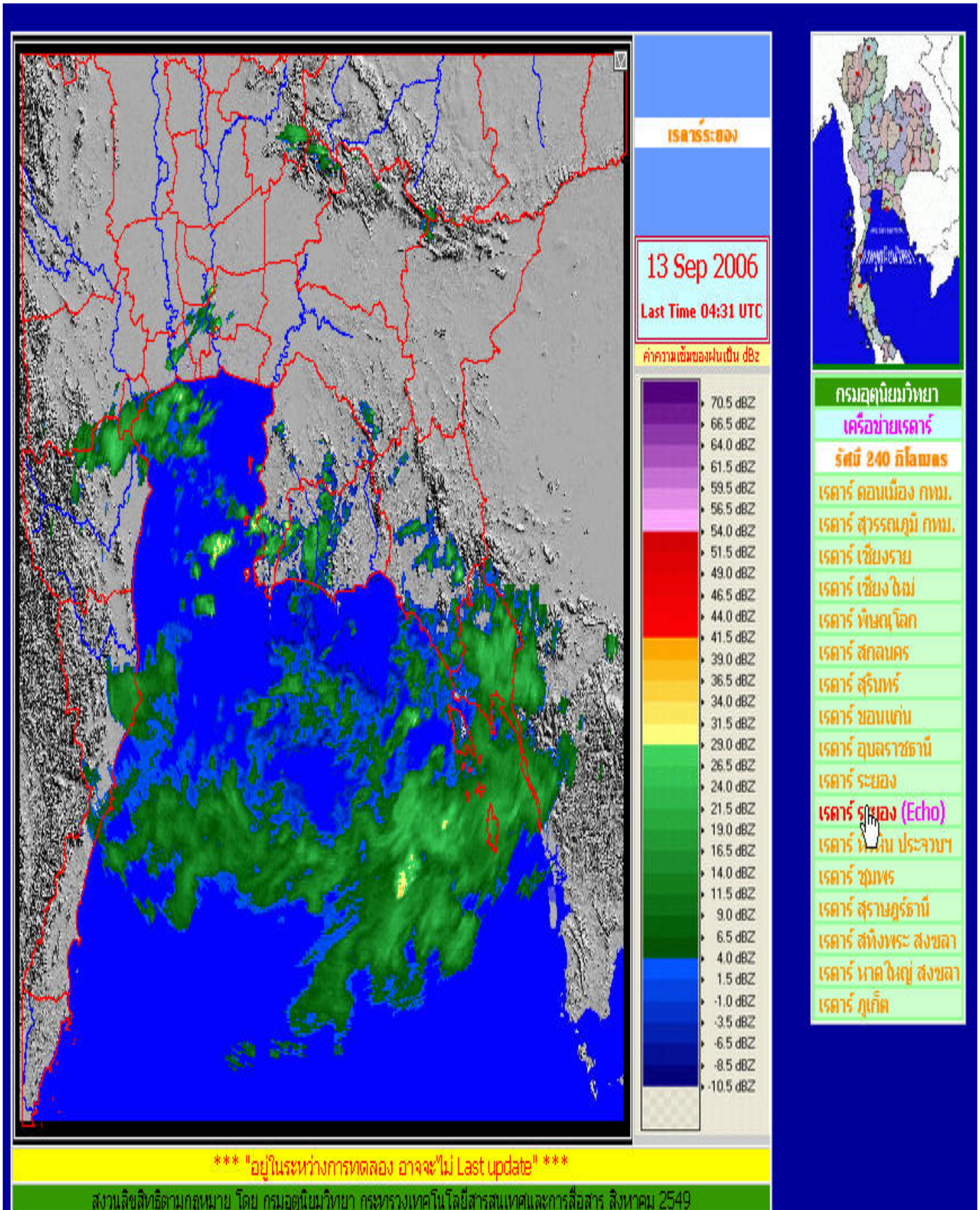
17'

17'

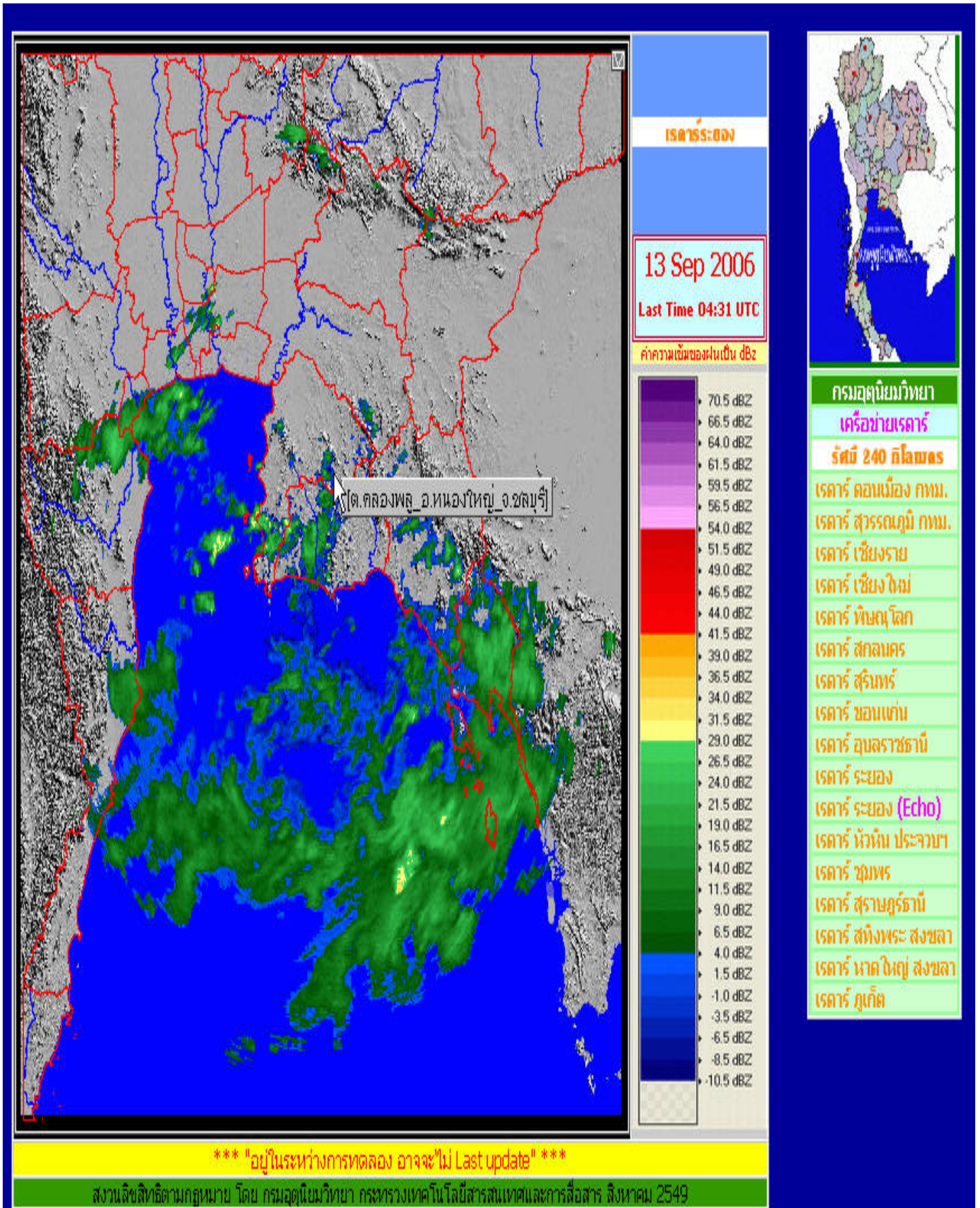
hooier@tmd.go.th

97' 98' 99' 100' 101'

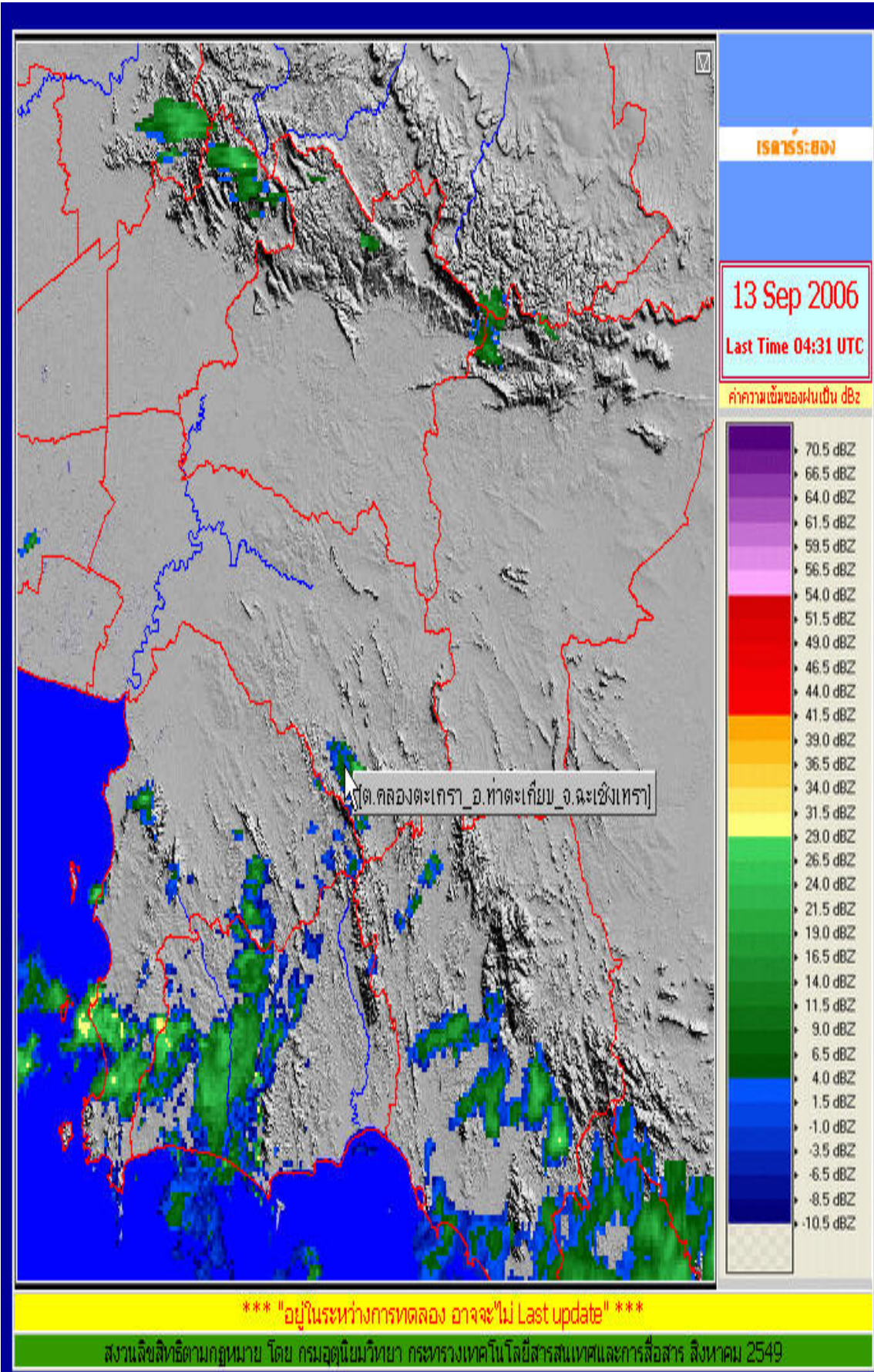
New weather radar imageries with GIS techniques, Ra Yong site



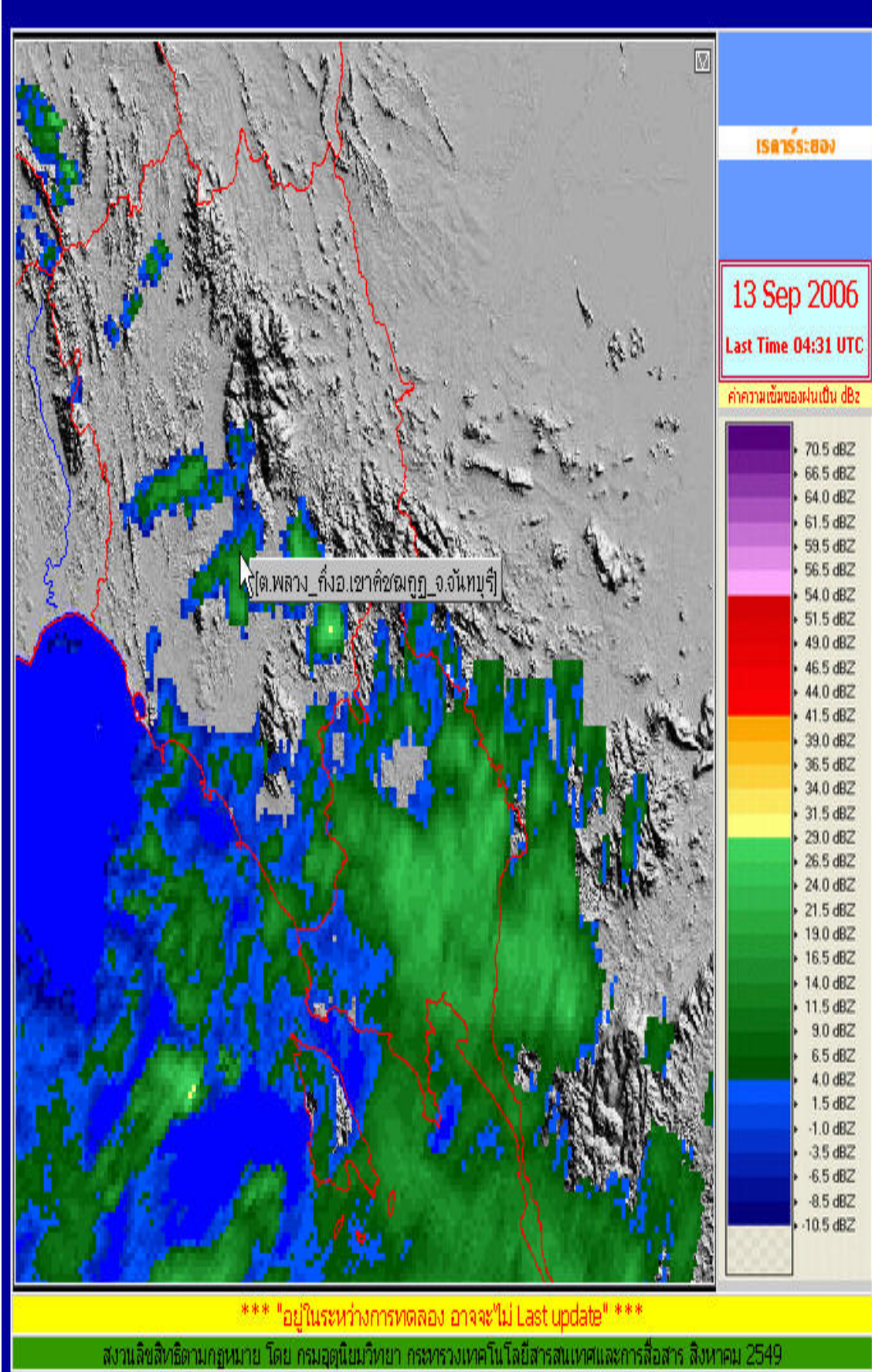
New weather radar imageries with GIS techniques, Ra Yong site



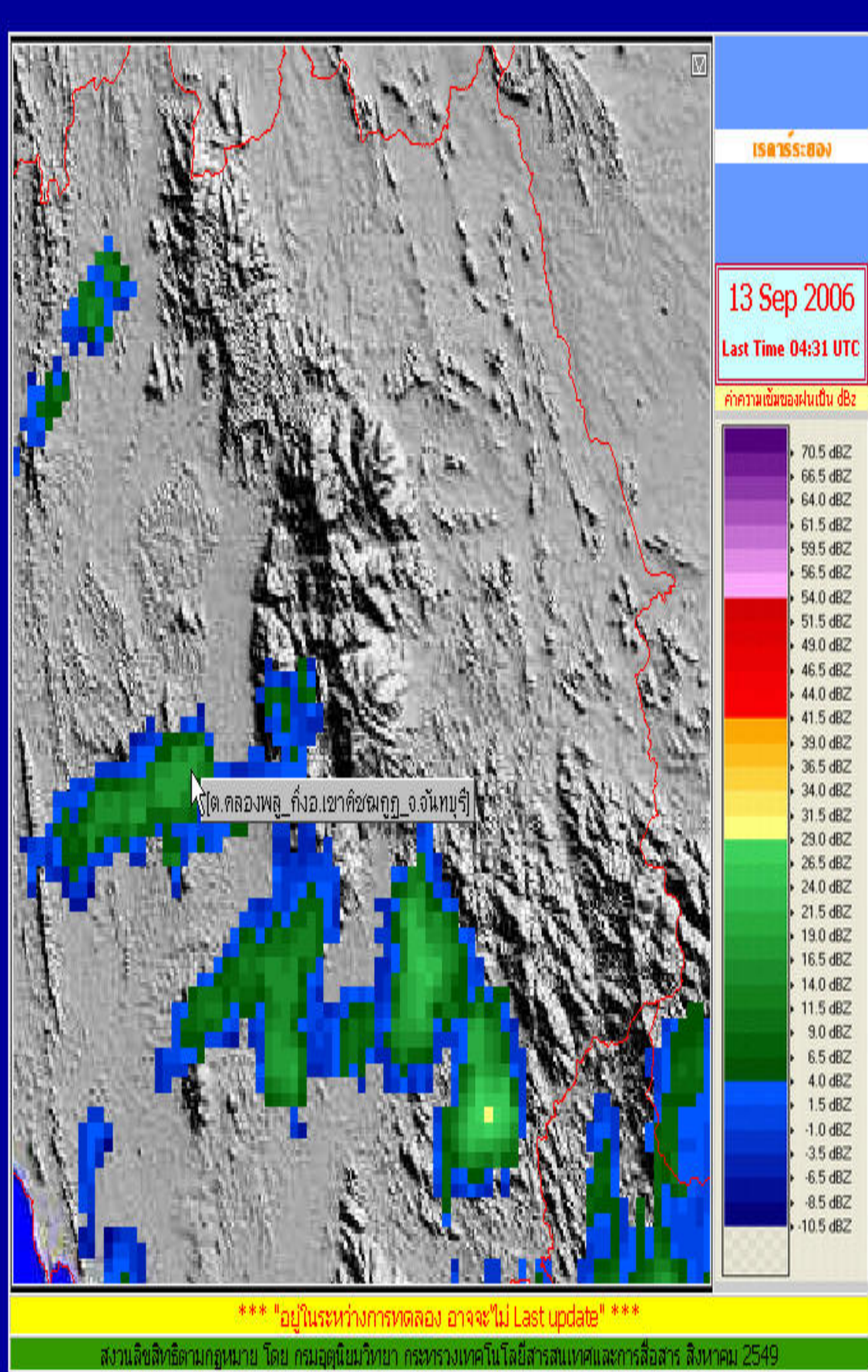
New weather radar imageries with GIS techniques, Ra Yong site



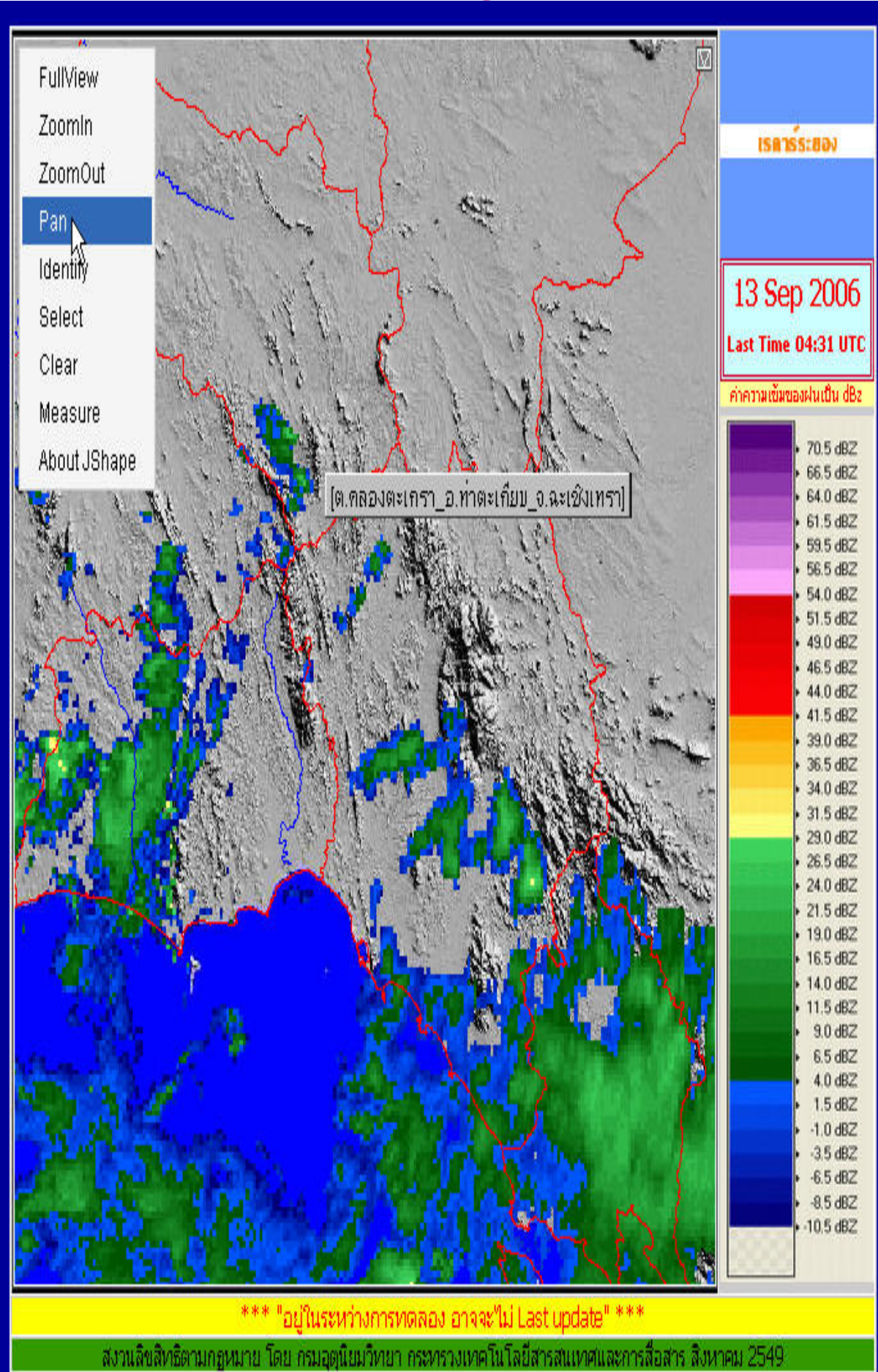
New weather radar imageries with GIS techniques, Ra Yong site



New weather radar imageries with GIS techniques, Ra Yong site



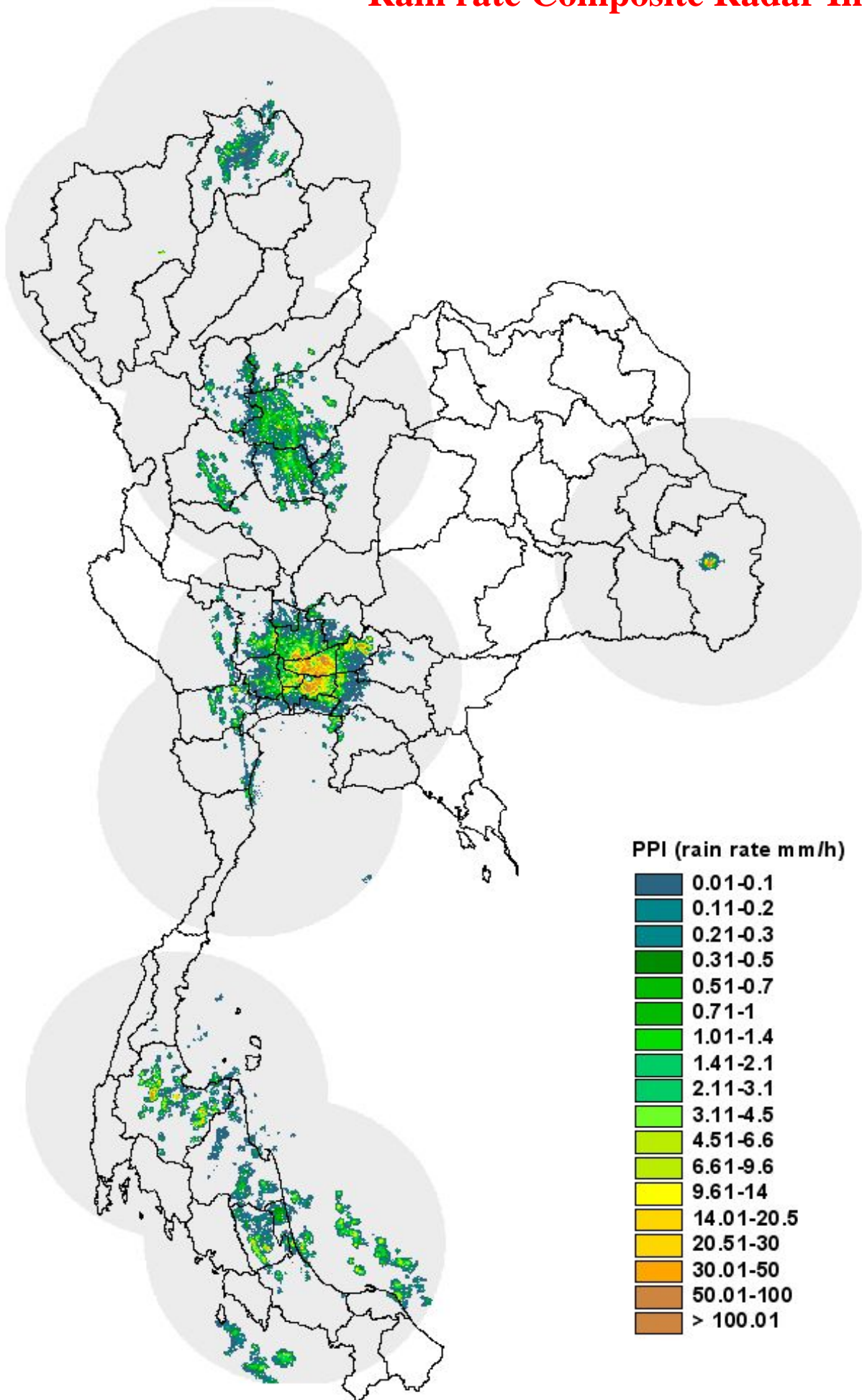
New weather radar imageries with GIS techniques, Ra Yong site



Universal File Format

- PhysicalRecordNumberRelativeToBeginnigFile_hw6,VolumeScanNumberRelativeToBeginingTape_hw7,RayNumberWithinVolumeScan_hw8,PhysicalRecordNumberWithinTheRay_hw9,SweepNumberWithinVolumeScan_hw10,SiteName_hw15_18,TimesTampmt,Gate,MaxRangeInKilometer,HieghtInKilometer,SlantRangeInKilometer,Latitude,Longitude,DZ,RainRateInMilimeterPerHour
- 1,1,1,1,1,Chiang
M,1.165933809E9,1,240.0,0.012875759150119848,1.0,18.777842825051607,98.9874654710244,36.0,6.484197773255049
- 1,1,1,1,1,Chiang
M,1.165933809E9,2,240.0,0.02586921473084658,2.0,18.772352242482594,98.99160166686356,36.0,6.484197773255049
- 1,1,1,1,1,Chiang
M,1.165933809E9,3,240.0,0.03898036620194034,3.0,18.766861585813746,98.99573758055878,-32768,0
- 1,1,1,1,1,Chiang
M,1.165933809E9,4,240.0,0.052209213017704315,4.0,18.7613708552325,98.99987321209584,-32768,0
- 1,1,1,1,1,Chiang
M,1.165933809E9,5,240.0,0.06555575463062269,5.0,18.755880050926297,99.00400856146054,-32768,0
- 1,1,1,1,1,Chiang
M,1.165933809E9,6,240.0,0.07901999048226571,6.0,18.750389173082574,99.00814362863863,-32768,0
- 1,1,1,1,1,Chiang
M,1.165933809E9,7,240.0,0.09260192001602263,7.0,18.74489822188878,99.01227841361596,-32768,0
- 1,1,1,1,1,Chiang
M,1.165933809E9,8,240.0,0.10630154266800673,8.0,18.739407197532337,99.01641291637837,-32768,0
- 1,1,1,1,1,Chiang
M,1.165933809E9,9,240.0,0.12011885786705534,9.0,18.733916100200684,99.02054713691166,-32768,0
- 1,1,1,1,1,Chiang
M,1.165933809E9,10,240.0,0.1340538650383678,10.0,18.728424930081268,99.02468107520168,-32768,0
- 1,1,1,1,1,Chiang
M,1.165933809E9,11,240.0,0.1481065636035055,11.0,18.722933687361515,99.02881473123433,-32768,0
- 1,1,1,1,1,Chiang
M,1.165933809E9,12,240.0,0.1622769529785728,12.0,18.717442372228863,99.03294810499547,-32768,0
- 1,1,1,1,1,Chiang
M,1.165933809E9,13,240.0,0.17656503257421718,13.0,18.71195098487075,99.03708119647101,-32768,0
- 1,1,1,1,1,Chiang
M,1.165933809E9,14,240.0,0.19097080179926706,14.0,18.706459525474592,99.04121400564684,-32768,0
- 1,1,1,1,1,Chiang
M,1.165933809E9,15,240.0,0.20549426004981797,15.0,18.700967994227835,99.04534653250887,-32768,0
- 1,1,1,1,1,Chiang
M,1.165933809E9,16,240.0,0.22013540672742238,16.0,18.6954763913179,99.04947877704306,-32768,0
- 1,1,1,1,1,Chiang
M,1.165933809E9,17,240.0,0.23489424121908087,17.0,18.689984716932226,99.05361073923534,-32768,0
- 1,1,1,1,1,Chiang
M,1.165933809E9,18,240.0,0.249770762915432,18.0,18.684492971258233,99.05774241907169,-32768,0
- 1,1,1,1,1,Chiang
M,1.165933809E9,19,240.0,0.26476497119620035,19.0,18.67900115448335,99.06187381653807,-32768,0
- 1,1,1,1,1,Chiang
M,1.165933809E9,20,240.0,0.2798768654374726,20.0,18.673509266795005,99.06600493162047,-32768,0
- 1,1,1,1,1,Chiang
M,1.165933809E9,21,240.0,0.29510644501351635,21.0,18.668017308380623,99.07013576430488,-32768,0
- 1,1,1,1,1,Chiang
M,1.165933809E9,22,240.0,0.31045370928950433,22.0,18.662525279427626,99.07426631457737,-32768,0
- 1,1,1,1,1,Chiang
M,1.165933809E9,23,240.0,0.32591865762879024,23.0,18.657033180123435,99.07839658242392,-32768,0

Rain rate Composite Radar Image



Near Future Plan for Weather Radar Development of Thailand during 2007-2009

- 1. Three C-band weather radars will be implemented as follow;**
 - 1.1 Install a new weather radar at Petchabun province**
 - 1.2 Replace two old weather radars at Chiang Mai and Chum phon.**

- 2. Changing all conventional meteorological instruments of met. stations to be automatic station manners.**

- 3. Changing all rainfall stations to be automatic station manners.**

- 4. All collected data will be transmitted to Head Office by a communication links.**

- 5. These data also will be used for early warning system and calibration of each weather radar later on.**

