

Observation facilities in Bangladesh contributing to **AMY-2008**

Md. Nazrul Islam

Department of Physics

Bangladesh University of Engineering & Technology

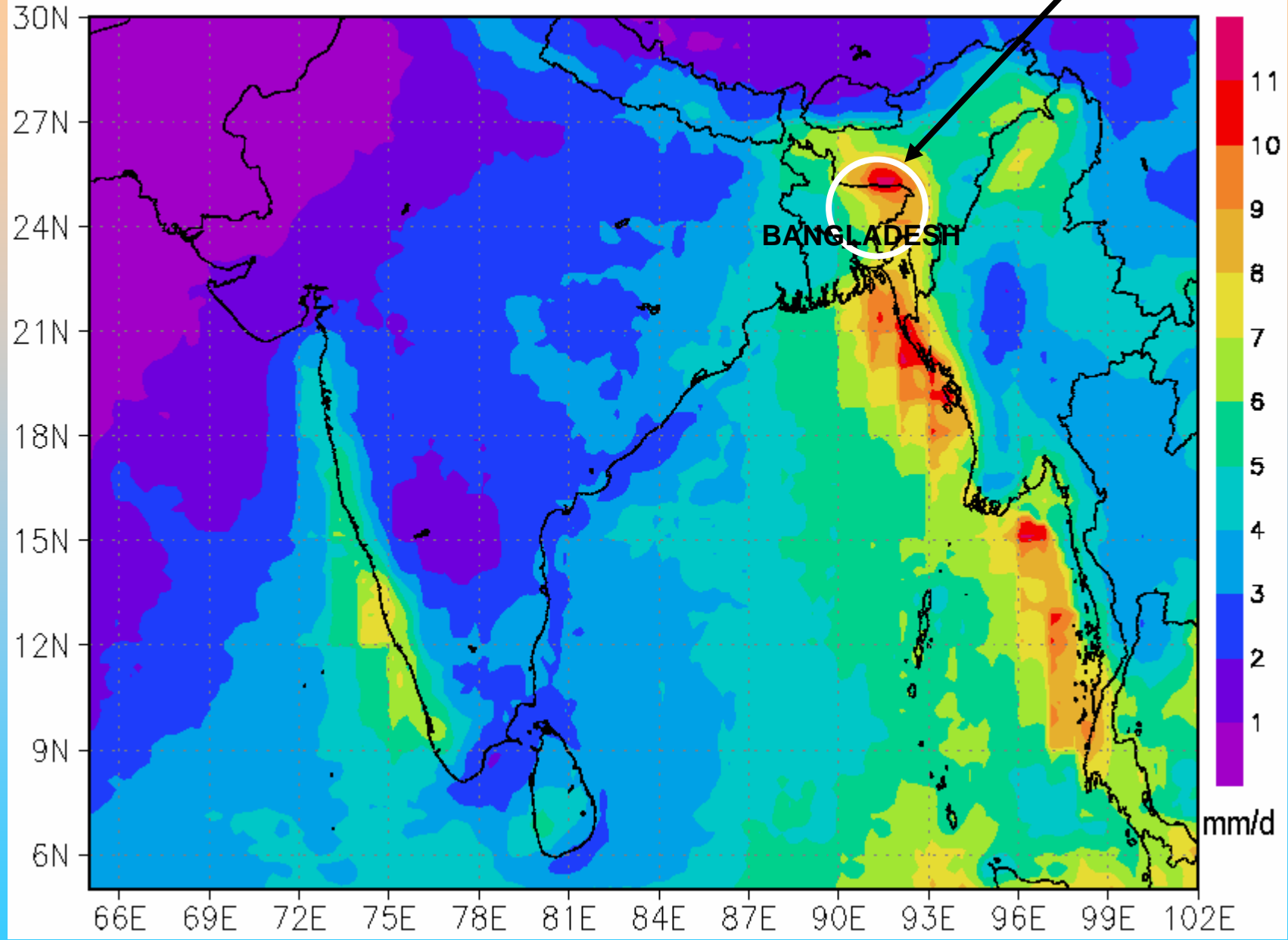
Dhaka-1000, Bangladesh

E-mail: mnislam@phy.buet.ac.bd

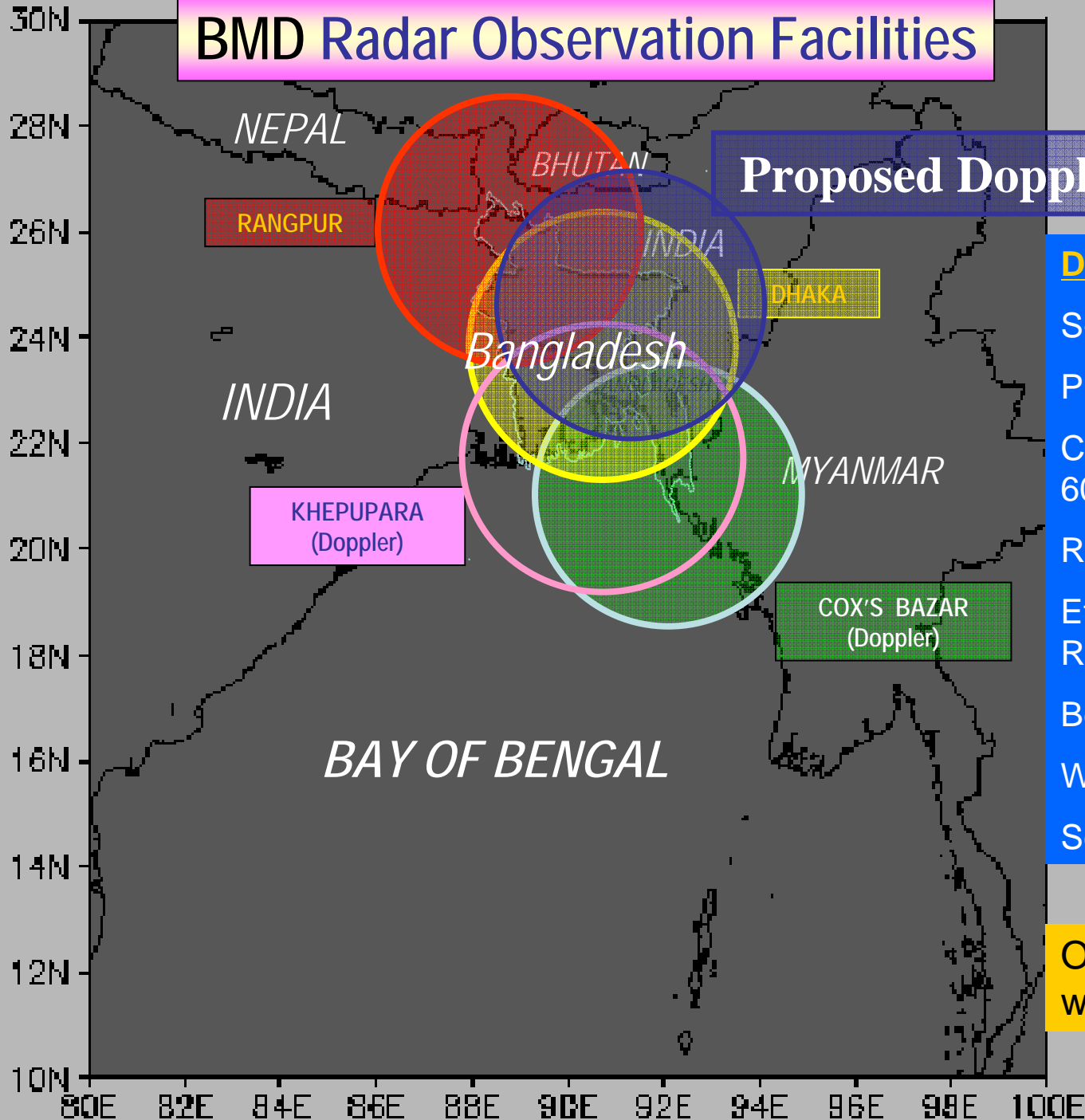
TRMM measured Rainfall

Pilot Project in Meghna Basin

V6 3B42 1998-2002 RF



BMD Radar Observation Facilities



Proposed Doppler Radar

Dhaka + Rangpur

S-Band Radar

PPI scan facilities

Coverage: 600km x 600km

Radius= 400km

Effective
Radius=250km

Beam width 1.7 deg

Wavelength=10cm

Scan rate=3 rpm

Operation: 1-hr
with 2-hr pause

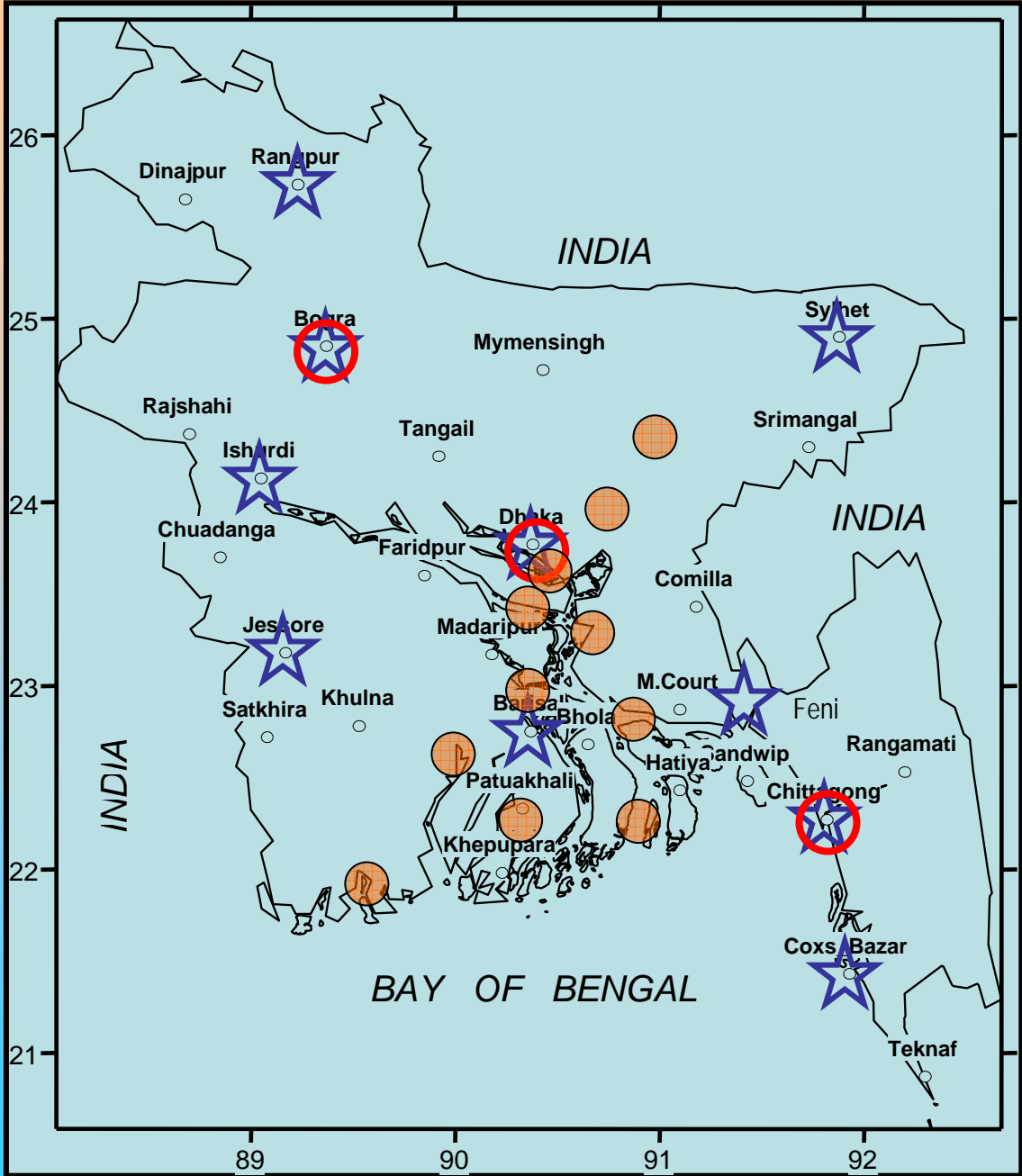
OBSERVATORIES OF BMD

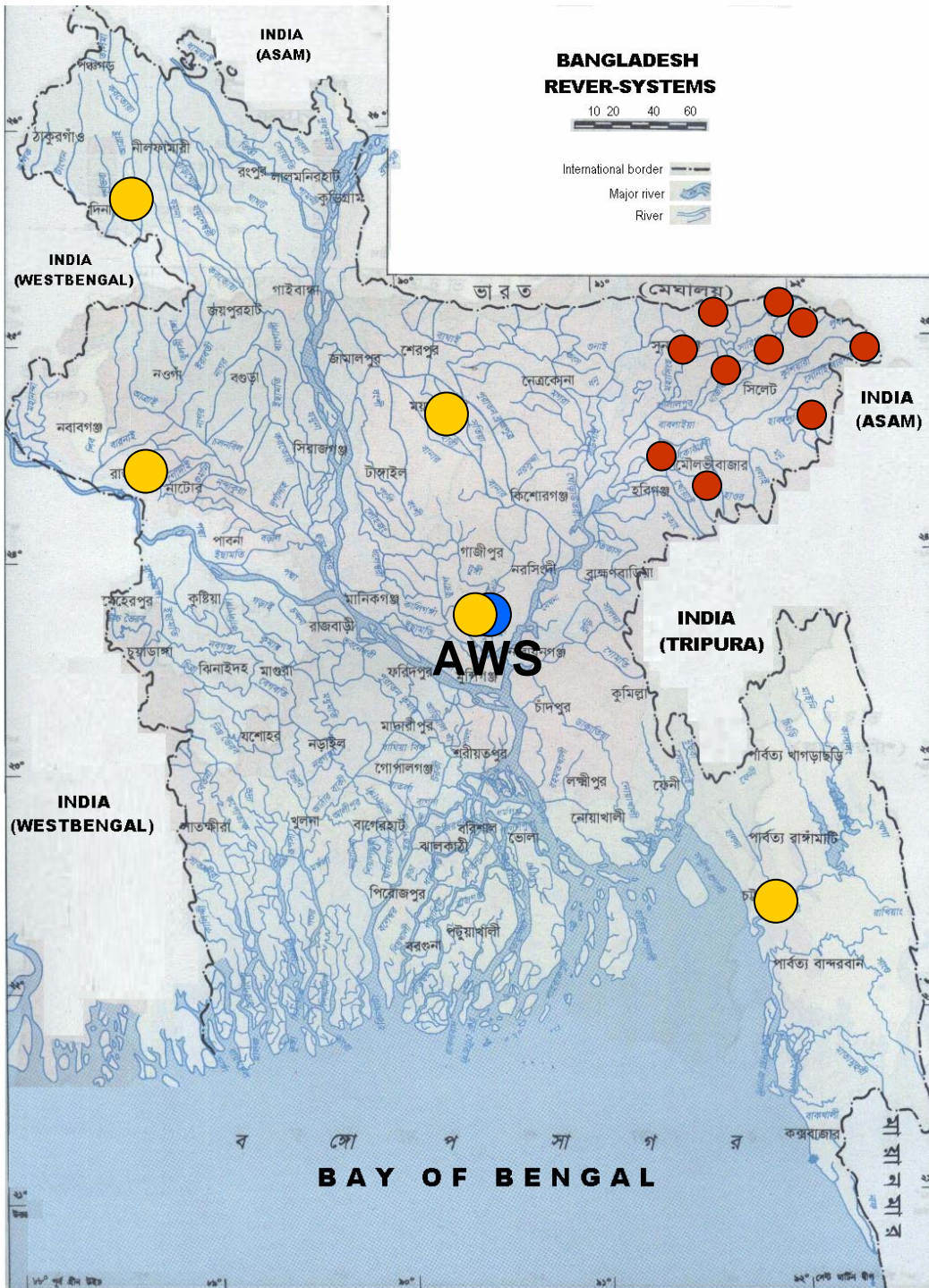
○ 34 LOCATIONS OF FIRST CLASS OBSERVATORY

● 11 Proposed FIRST CLASS OBSERVATORY

★ 10 LOCATIONS OF PBO

○ 3 LOCATIONS OF RAWINSONDE OBSERVATORIES





● Installed Automatic Rain-gauges under MAHASRI

● Automatic Rain-gauges, Japanese Research Group

Target:

Preparation of composite map for rainfall using rain-gauge, radar and satellite data, which will be utilized for the **real-time flood monitoring** and as the **input of water modeling** for flood forecasting.

Support Necessary for **AMY-2008 in Bangladesh**

Several Components such as

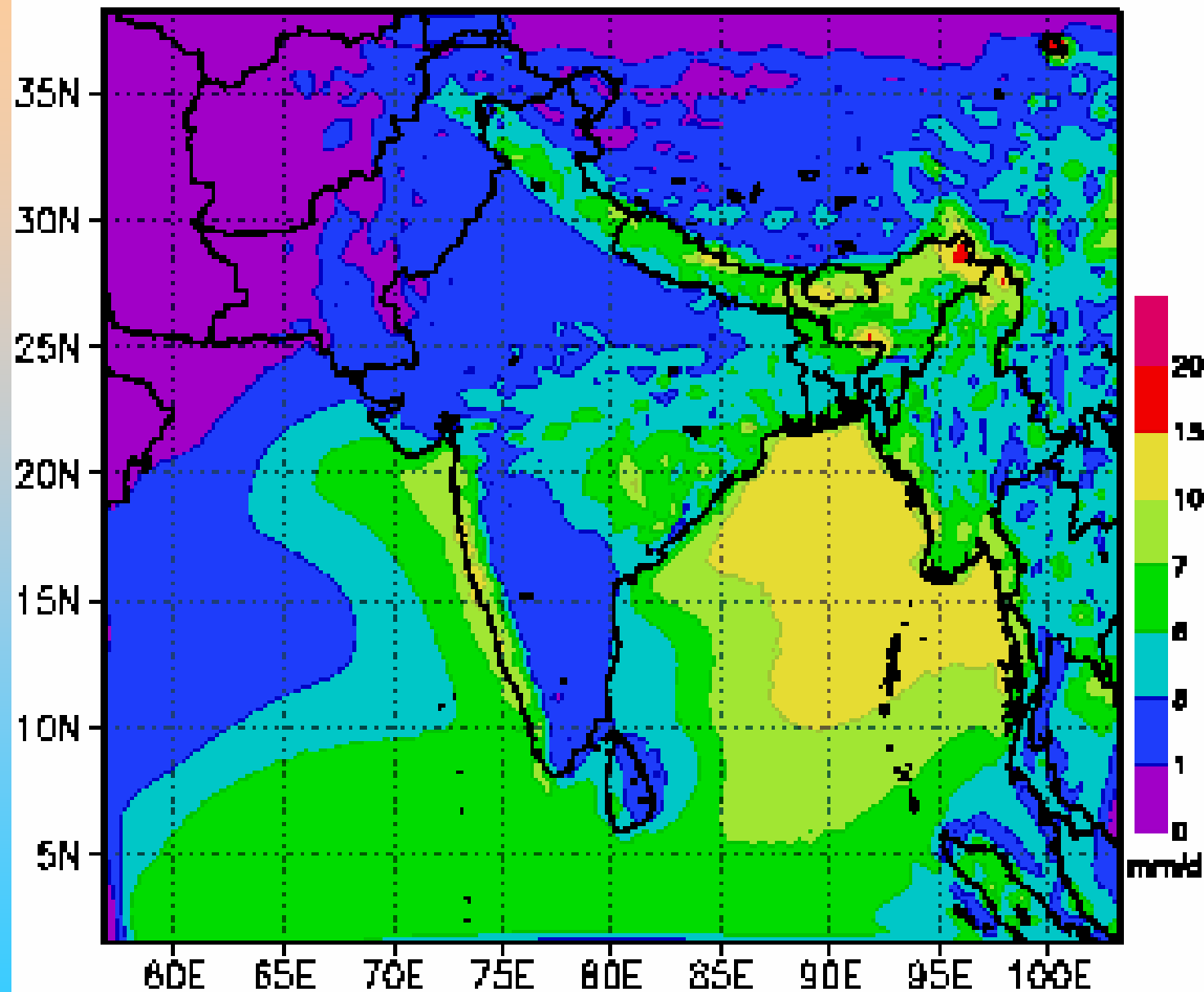
Magnetron are necessary for Continuous Radar Operation

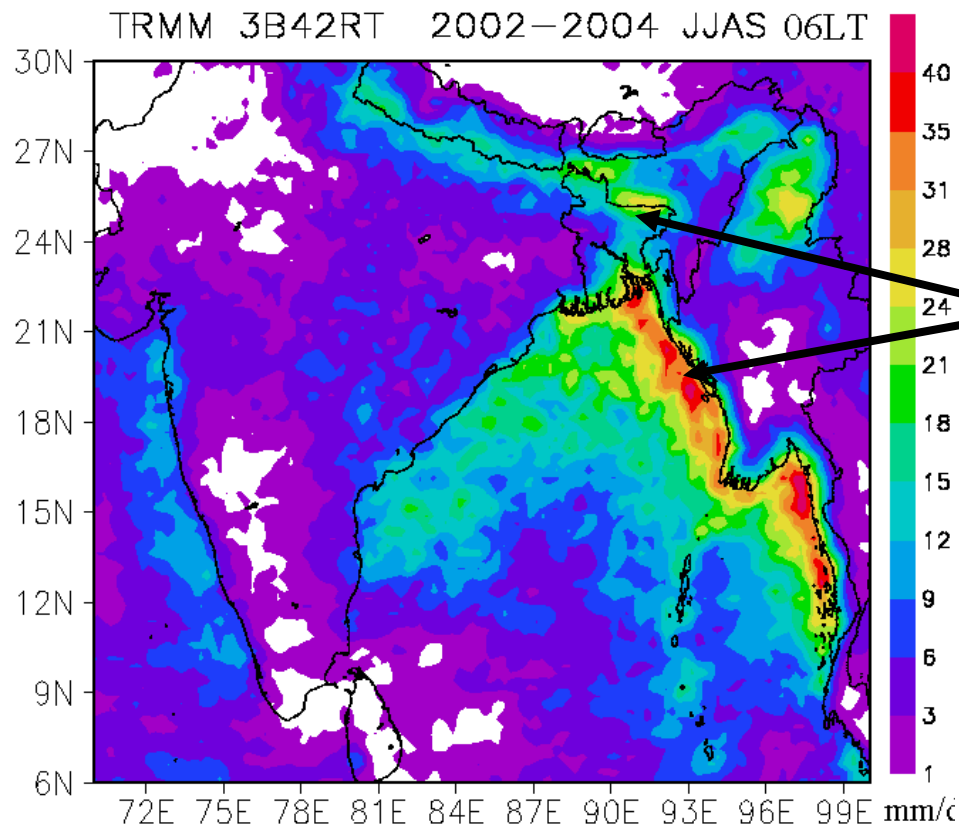
Access of Real-Time Satellite/TRMM data

RS Balloons for Intensive observation, if necessary

Rainfall Simulated by RCM for 1961-1990

blnosula_RF1961-90

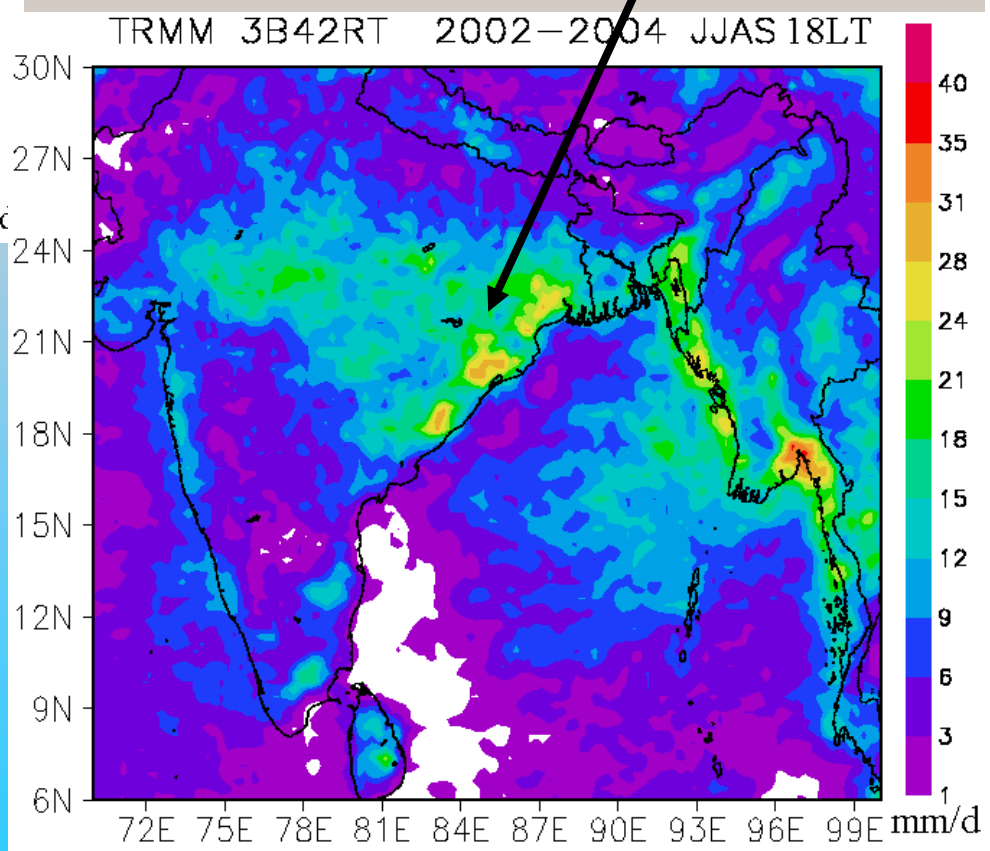




06LST

18LST

TRMM 3B42RT



**Therefore,
Observation at
concise region
is important**