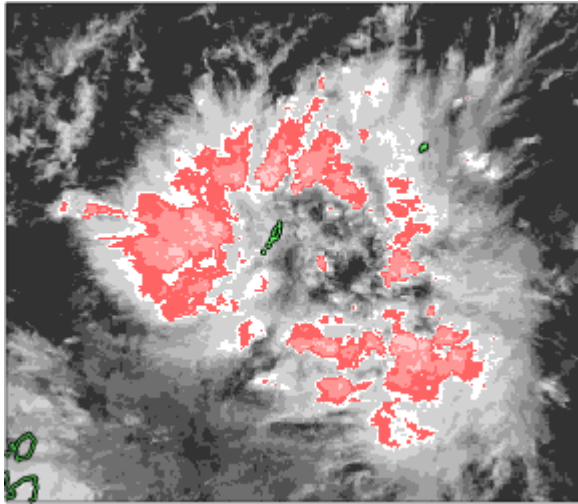


# ***Science and Observation Plan of JAMSTEC/IORGC\* west Pacific***

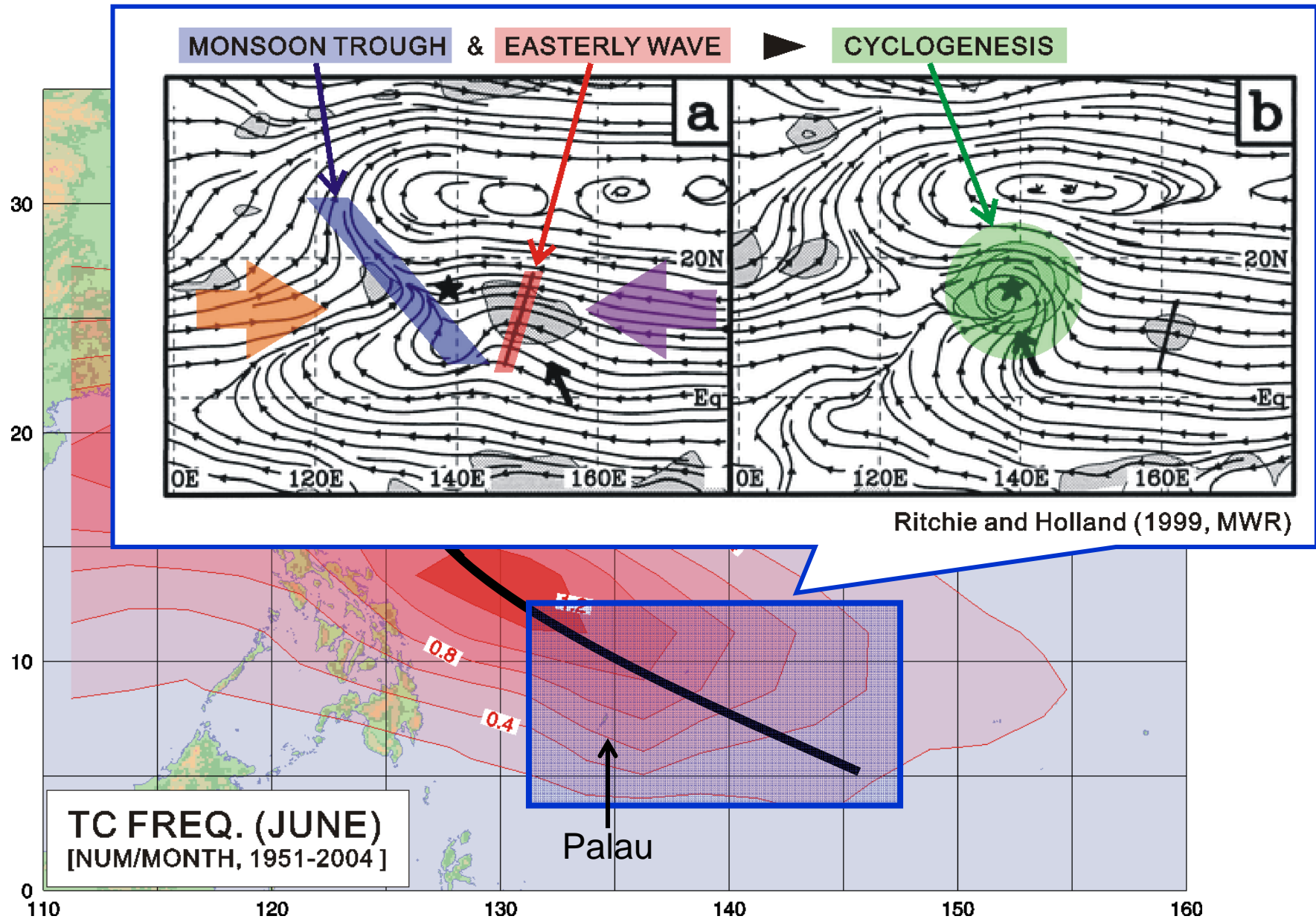


**\*Japan Agency for Marine-Earth Science and Technology,  
Institute of Observational Research for Global Change**

***Masanori YOSHIZAKI***  
**(JAMSTEC/IORGC)**

- Formation of tropical depressions/typhoons is not understood well.
- Target - Study the environment and cloud-related vortices around tropical areas.

# Occurrence frequency of TC

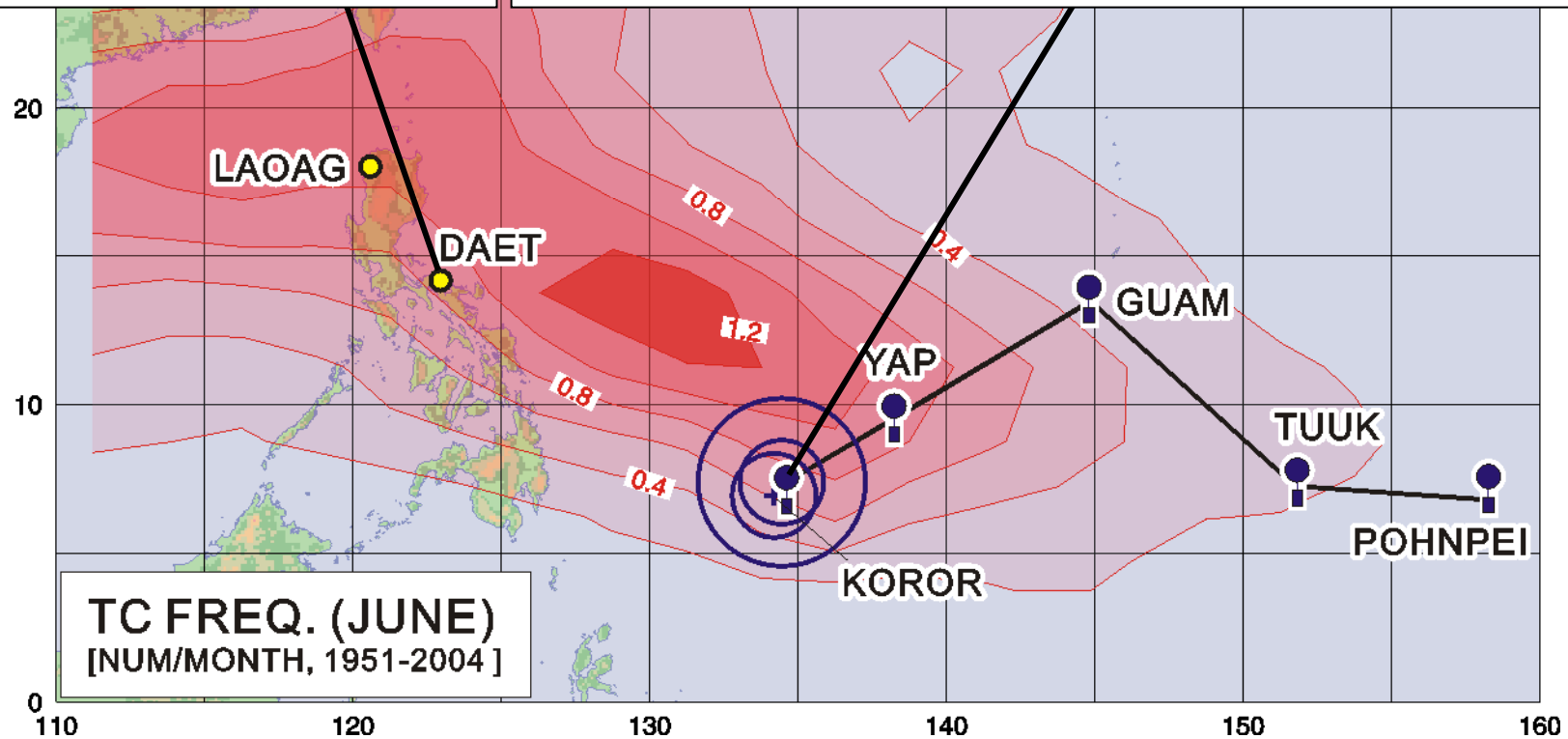
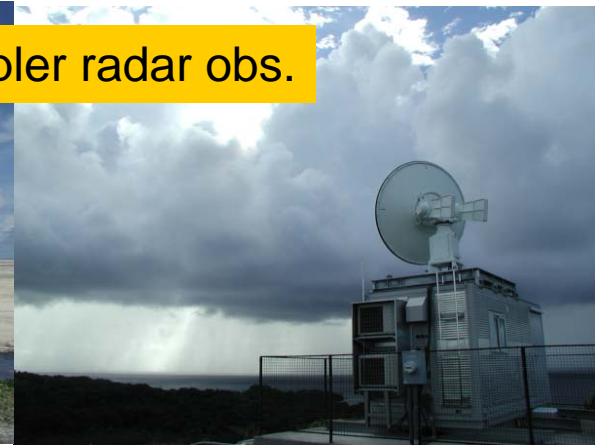
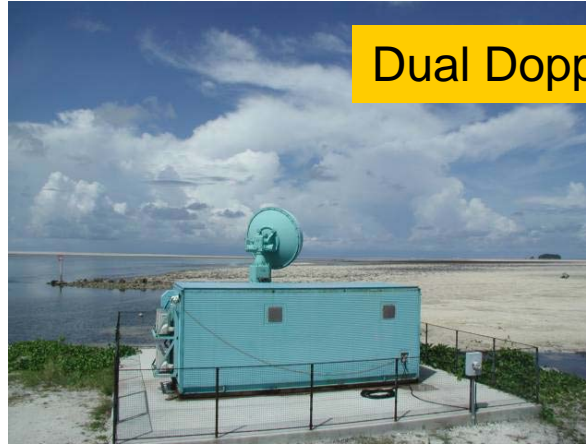


# PALAU-2005 (June-July)

AWS - surface obs.



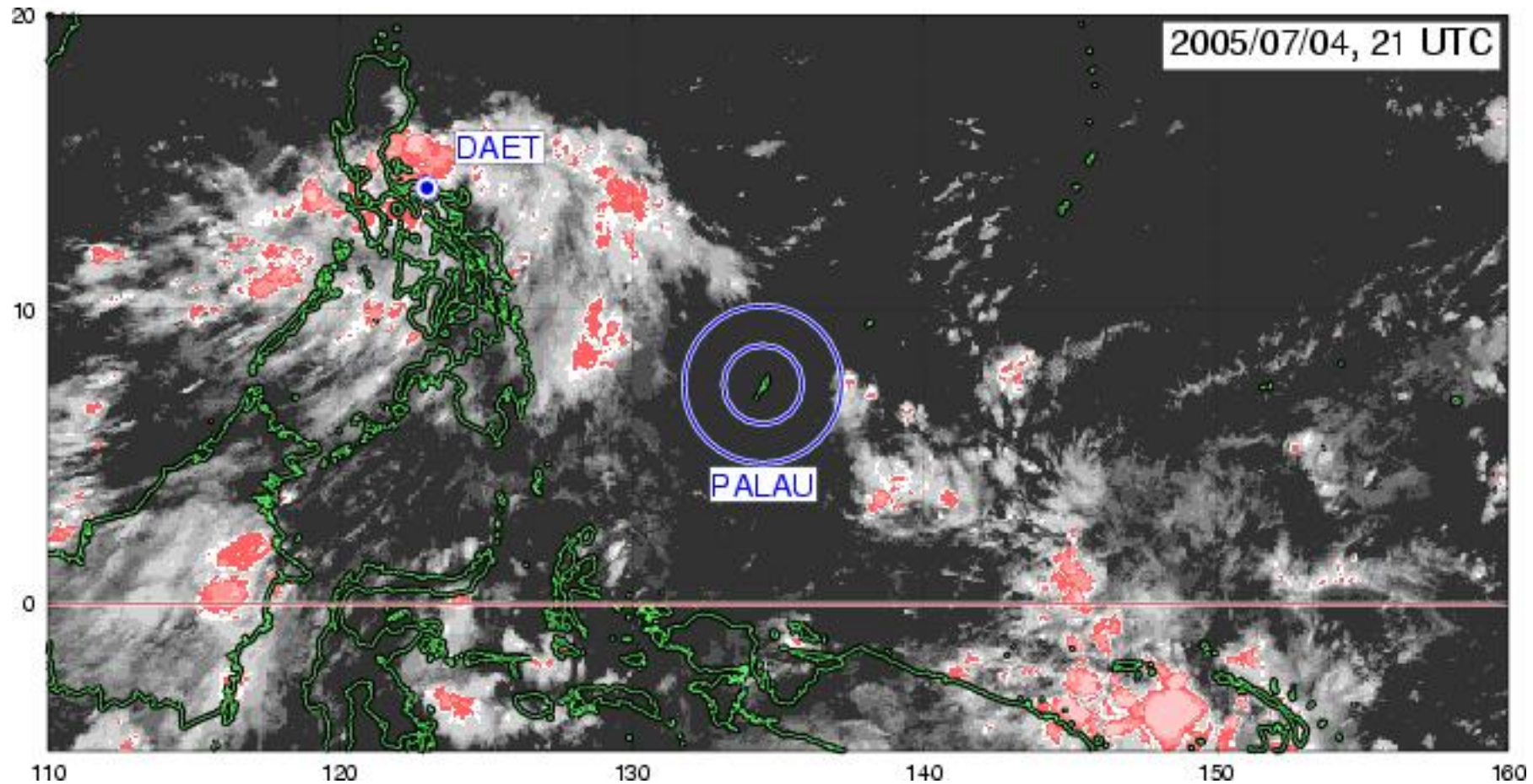
Dual Doppler radar obs.



Pacific Area Long-term Atmospheric observation for Understanding climate change

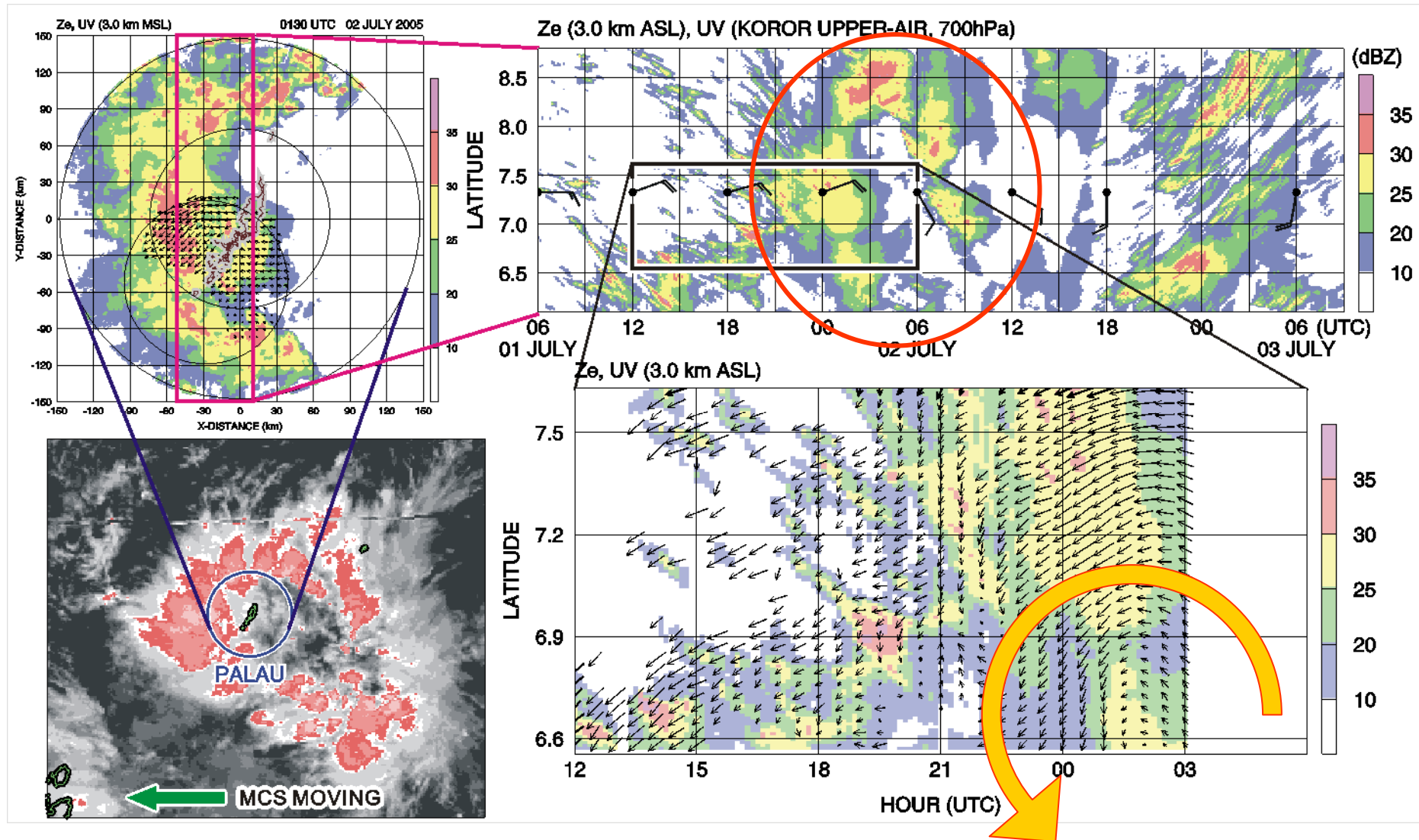


# Overall Evolution (satellite images)



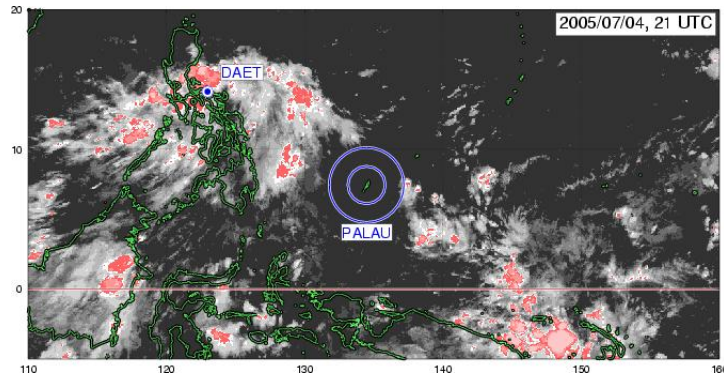
- **Formation of a rotating cloud system (MCS) over Palau**
- **Dissipation over the Philippines Sea**
- **Redevelopment and generation of tropical depression (TD) near Philippines**

# Internal Structure (dual DR obs.)

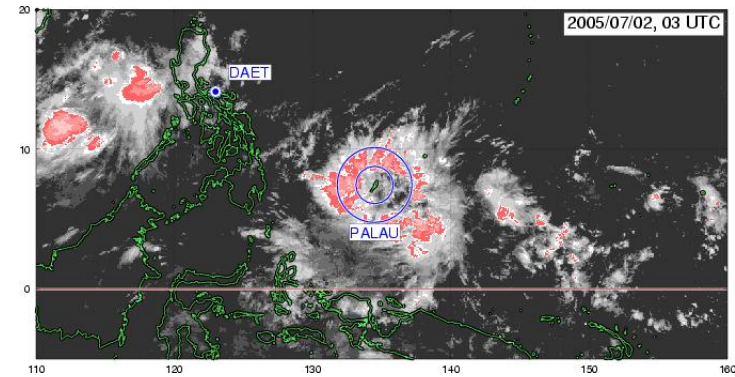
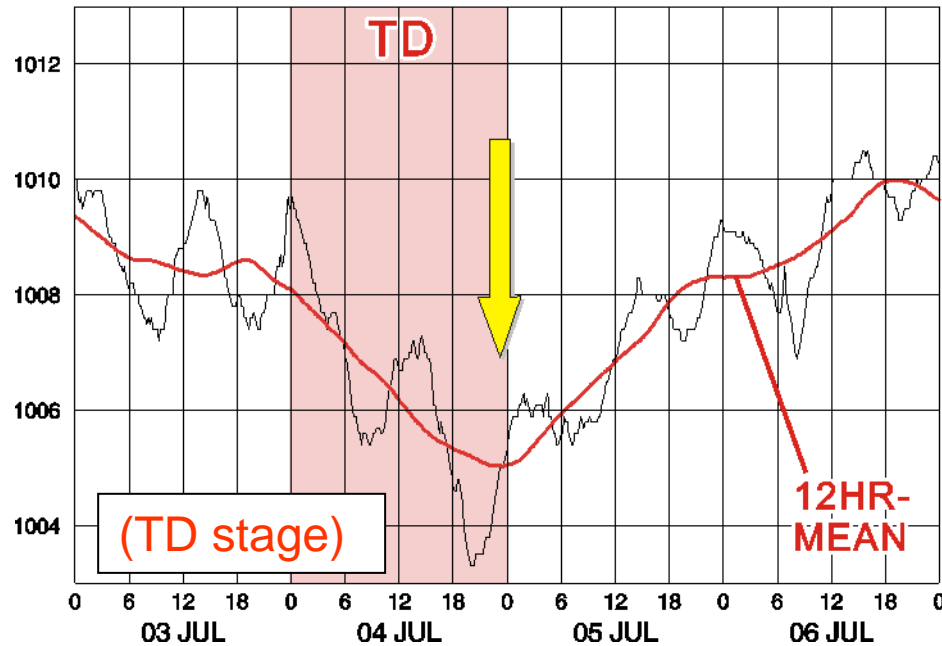


- Northerly (forward) + southerly (rear)
- Cyclonic motion in the rotating MCS

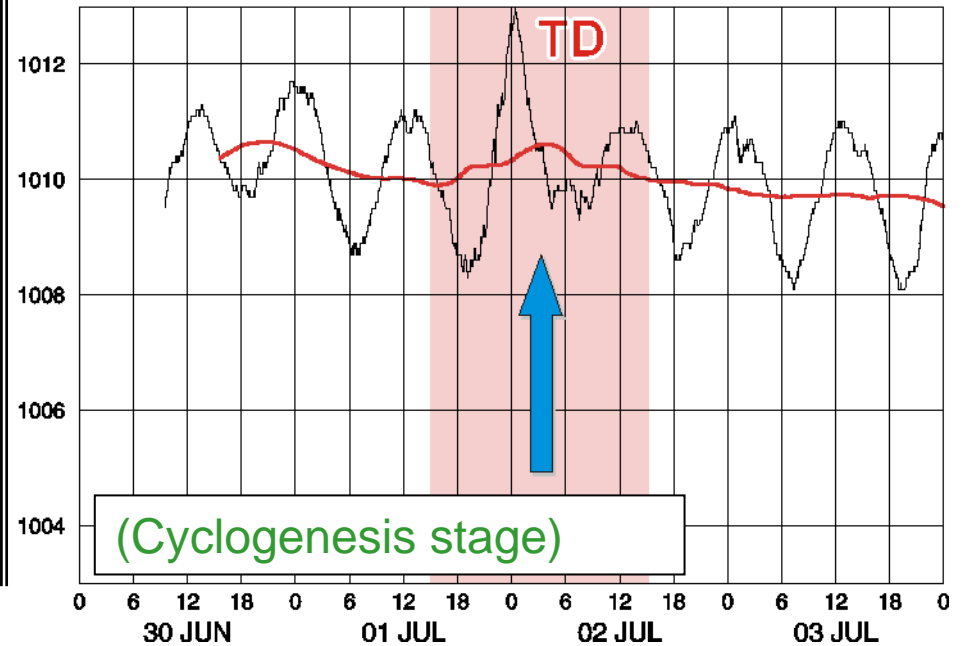
# Sea Level Pressure (AWS obs.)



DAET, PHILIPPINES



PELELIU, PALAU



No pressure drop at the beginning of cyclogenesis



# PALAU-2008 Plan

