

# **GAME-T Database: How it should be used?**

**AGATA, Yasushi Univ. of Tokyo**

**J.MATSUMOTO, T.OKI, K. TAKAHASHI  
and K. MUSIAKE. Japan**

**อากาตะ ยาสึชิ  
(น้ำพุ) ญี่ปุ่น**

# Contents

- **What is GAME-T DB?**
  - **What GAME-T DB Contains?**
  - **How it was Made?**
  - **What are Characteristics?**
  - **How to Access GAME-T DB**
- **Example of Its Application**

# What is GAME-T DB?

- Data Archive of GAME-T
  - Intensive GAME-T Observation (Flux etc.)
  - “Routine” Observation
  - Remote Sensing
  - Other Supportive Data
- Document Archive of GAME-T
  - Project History Record
  - Presentation Material
  - Documents
- (And in Future...)

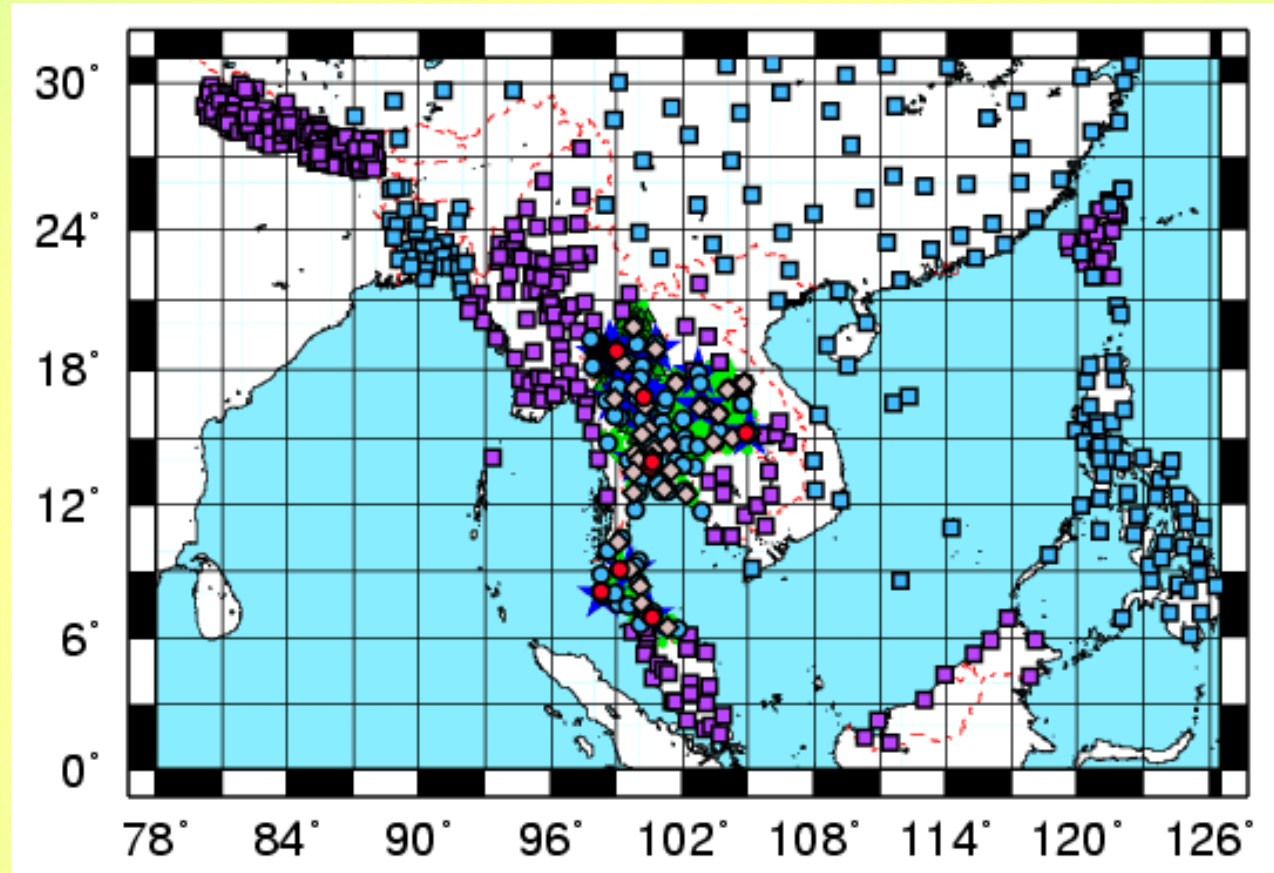
# What GAME-T DB contains?

- [1] **Field Observations** done by **GAME-T Researchers** →
- **Ground Measurements:**
  - Flux / Radiation / Rainfall etc.
- **Upper Air Observations**
  - Sonde / Lidar / Wind Profiler / GPS etc.



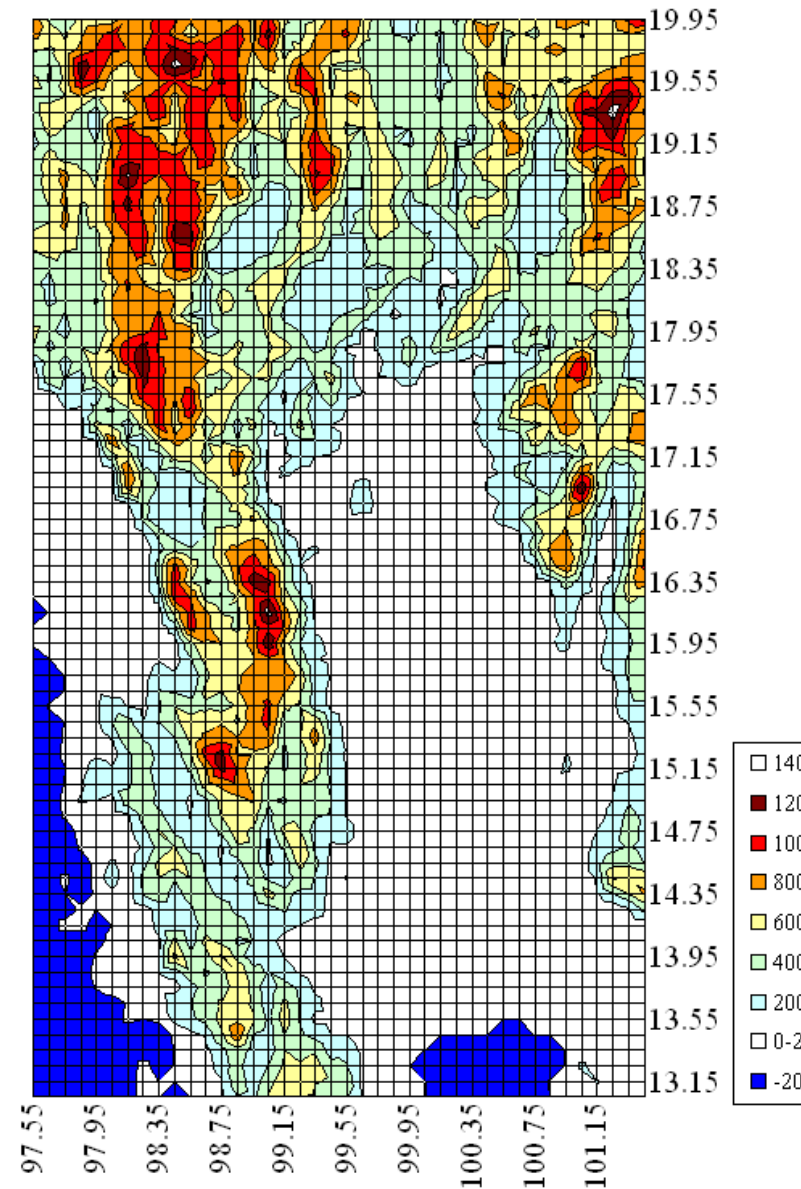
# What GAME-T DB contains?

- [2] Routine Observations
  - Weather / River discharge etc.
  - By various countries in SE Asia, >1000 sites



# Other Data for Supporting Research

- **Ex. 0.1deg DEM of ChaoPhraya River, Thailand**





# How GAME-T DB was made?

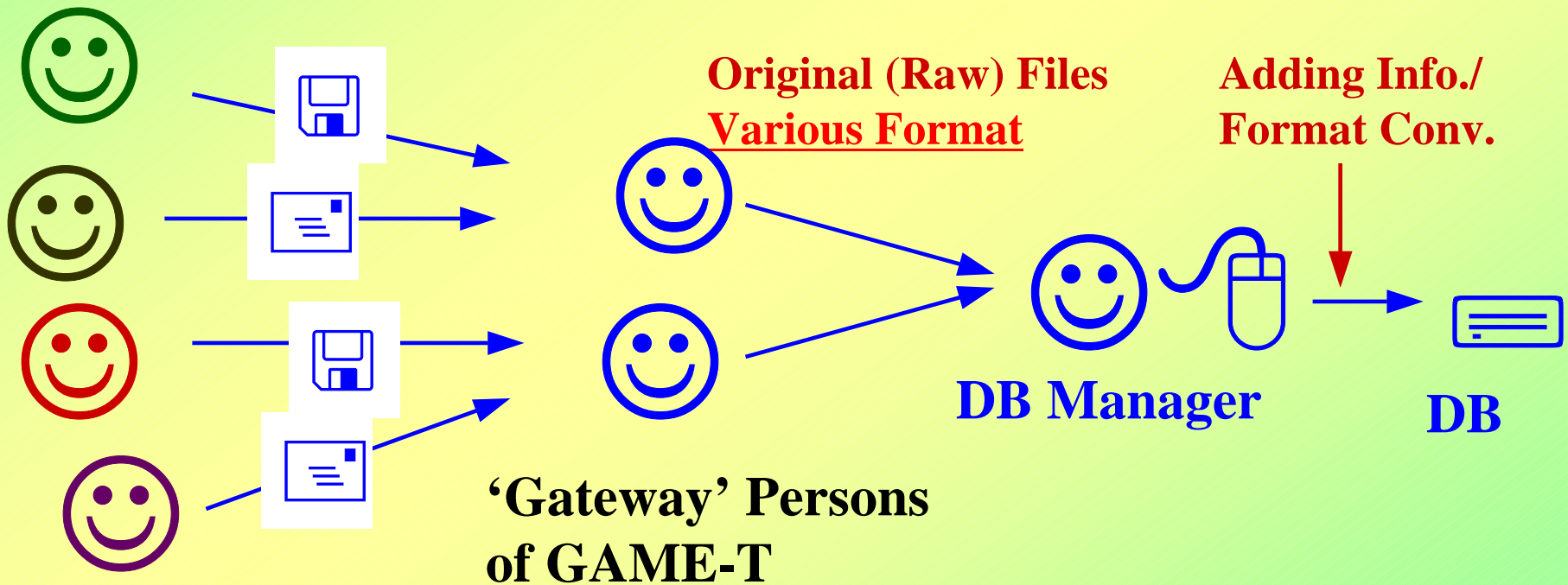
- Data Providers sent files to us in various media
  - More than 100 FD, CD-R, ZIP, MO, DVD-R, DLT...
  - On-line publication
  - E-mail attached

•GAME-T  
Member can  
view contents  
of each disk  
(Password  
Needed)



# [1] Routine Obs. Data: International Collaboration

- '3 tier' system



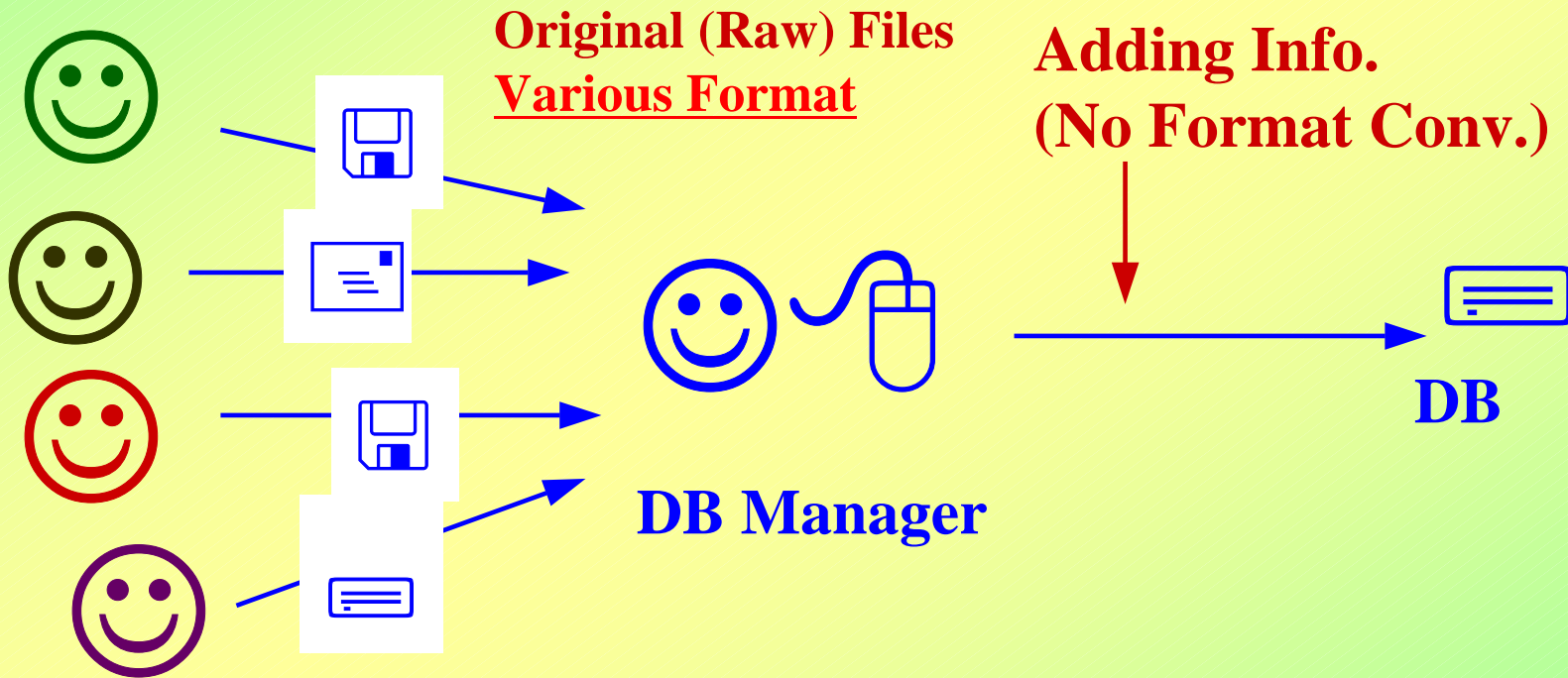
**Governmental  
Agencies on Weather/River  
Observation**



# How Datasets are being collected?

## [2] Intensive (GAME-T) Obs.

- Researchers send files to DB manager



Each Researcher

# What are Characteristics?

- **[Contents] Richness in not only measurements by researchers but also routine (operational) observation by official agencies from various countries**
- **[User Interface] User-friendly HTML files**

# Number of Files

- 7464 of 12790 files are routine observation files.

Original Files 2056

Remote Sensing 1679



Routine Files 7464

**Total : 12790**

# How to access GAME-T DB



## DataCenter Top Page

GAME-T  
DataCenter

[GAME-T](#) >> DataCenter (Current Position)

### Navigation

Choose Link!

- [GAME-T TOP](#)
- [Documents](#)
- [DATA](#)
  - [Field](#)
  - [Sonde](#)
  - [Routine](#)
  - [R/S](#)
  - [Satellite Data](#)
- [Related Links](#)
- [Maps](#)
- [Obs. List](#)
- [Contact Persons](#)
- [Original Data Files](#) (GAME-T

### Data Contents

#### Field Observations

Flux observations at paddy field and forest, Experimental Basin Observation and Soil Moisture Measurement

#### Sonde Observations

Rawinsonde enhanced observation etc.

#### Routine (Station) Observations

Routine Obs. Data (Rainfall, Air Temp., Wind Velocity, River Discharge etc.) by local authorities, including both routine and radar observation.

**2002 Aug. 8-9 RID daily river discharge 1980-1994**

#### Remote Sensing

Remote sensing activities other than satellite observation.

**2002 Jun. 10-11 : GPS Observation datacenter opened**

### What's New

Oct. 8, 2002  
New Item :  
[Original data files](#) provided by each organization and/or researchers.  
Opened only for GAME-T members.

Oct. 7, 2002  
**Errata Correction :**  
The zipped archive of daily discharge file

**Top Page Image (→DEMO)**

# WWW Access

- Two WWW Servers (same contents)
  - Univ. of Tokyo, Japan  
<http://hydro.iis.u-tokyo.ac.jp/GAME-T/>
  - NRCT, Bangkok, Thailand  
<http://game-t.nrct.go.th/>
- Want to know Password?
  - [Contact agata@iis.u-tokyo.ac.jp](mailto:agata@iis.u-tokyo.ac.jp)



# Server in NRCT

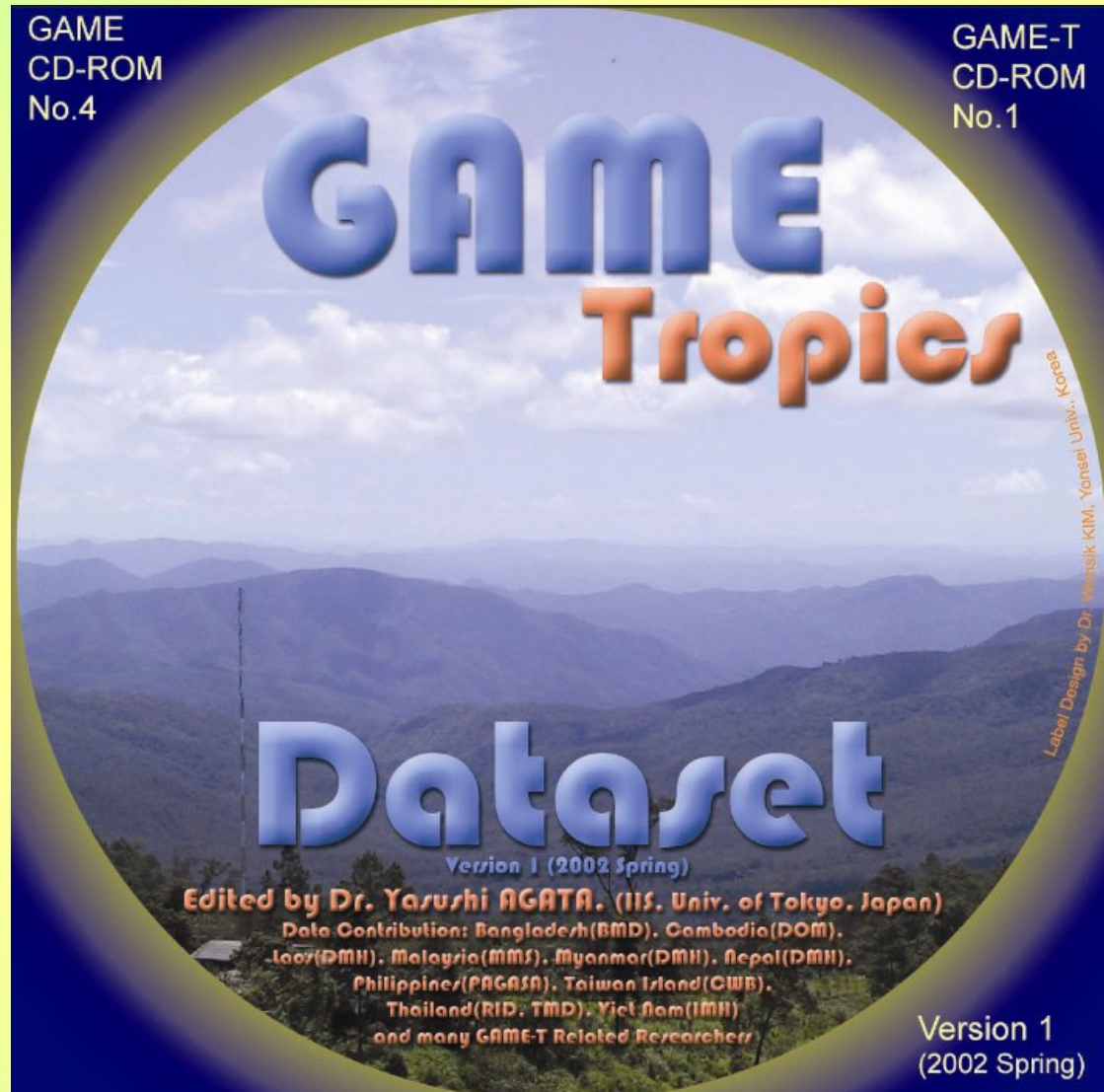
- A DB Server was installed in NRCT, Thailand
  - Maintained by NRCT's staff.  
Thank you!



<http://game-t.nrct.go.th/>

# CD-ROM

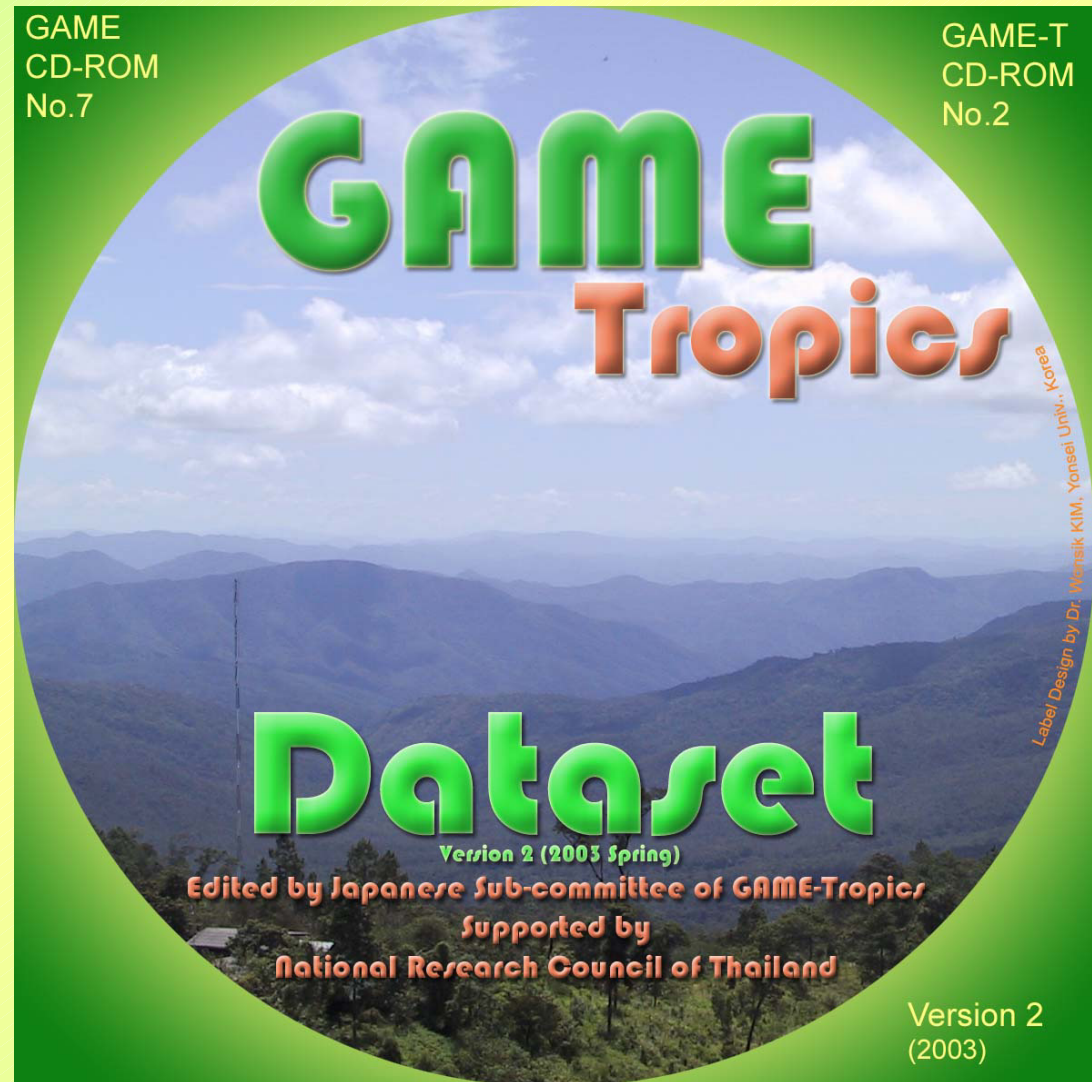
- CD-ROM Version1
  - Data for 1998
  - Contains more than 8000 files (620MB)
  - 500 Copies Pressed
  - >490 Distributed





# CD-ROM Ver. 2 in Press!

- CD-ROM Version2 (planned)
  - 2 CD-ROMs
  - Data for 1997-2002
    - GAME-2 Official Data collection period
  - More Flux/Sonde Observations
  - Available in this autumn

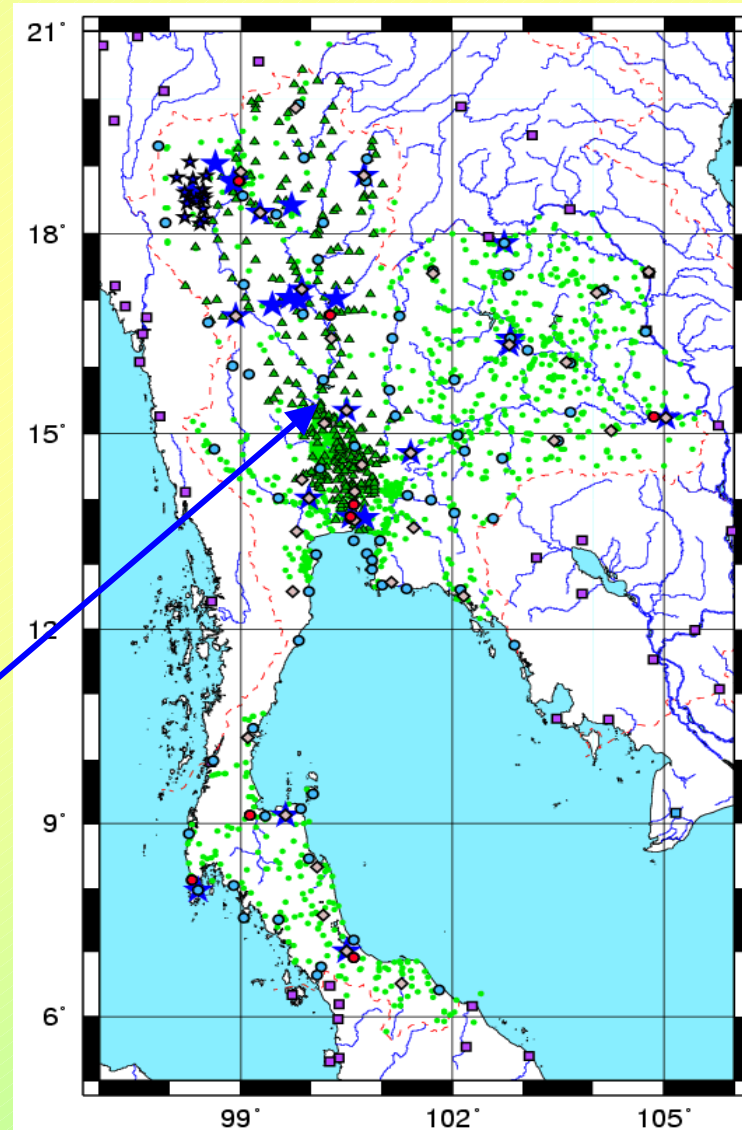


# To the Next Step

- **Data Collection Phase**
  - Done!
- **Data Publication Phase**
  - Done/Doing!
- **Utilization Phase**
  - The next step!
  - For What?
    - Research / WR Management

# Ex. Research:

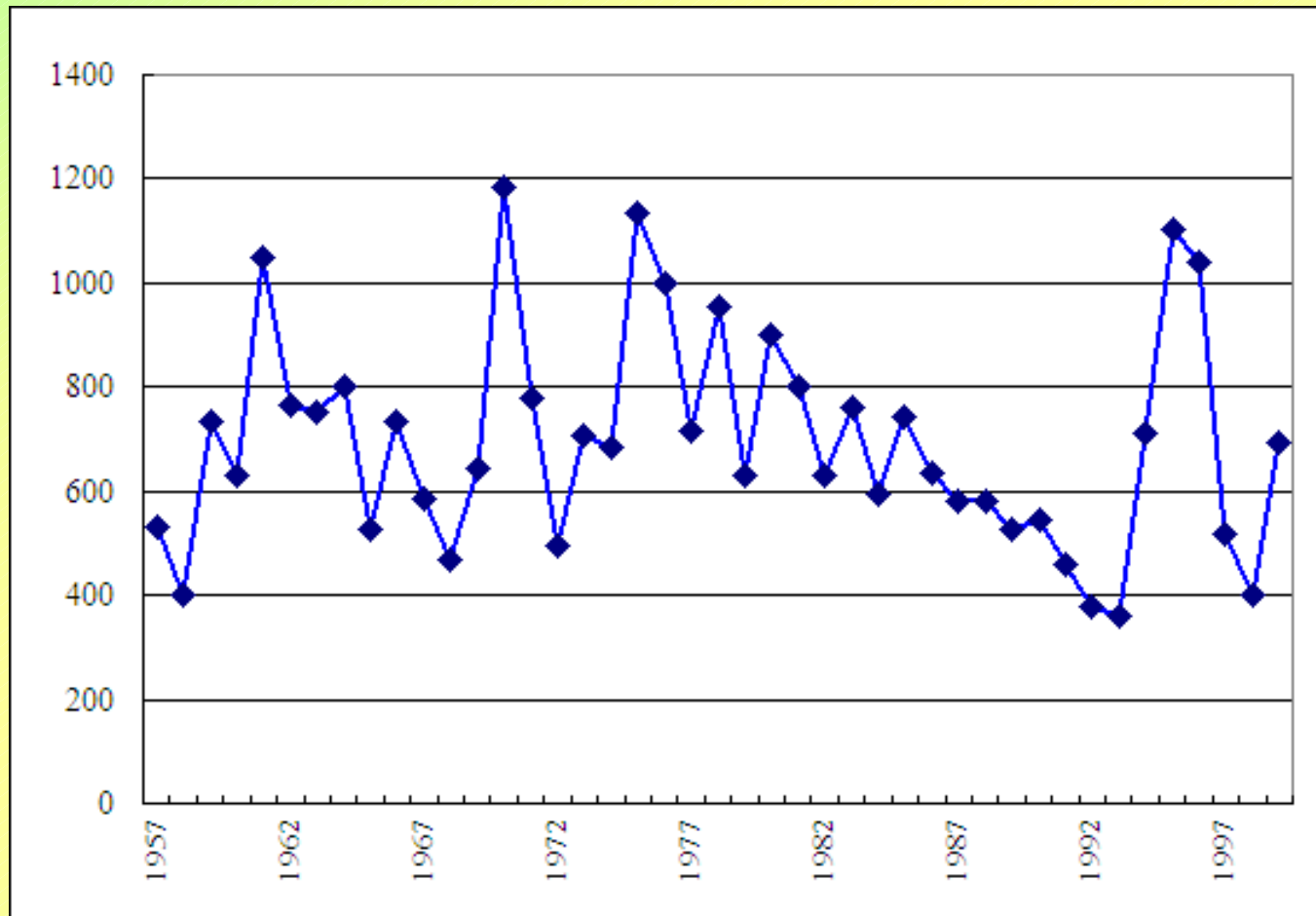
- **Kanae (2001) : Obvious Decrease in September Rain in these decades in Thailand**
- **How about September Discharge?**
- **“C.2” Location (Nakhon Sawan), ChaoPhraya Riv., Thailand**





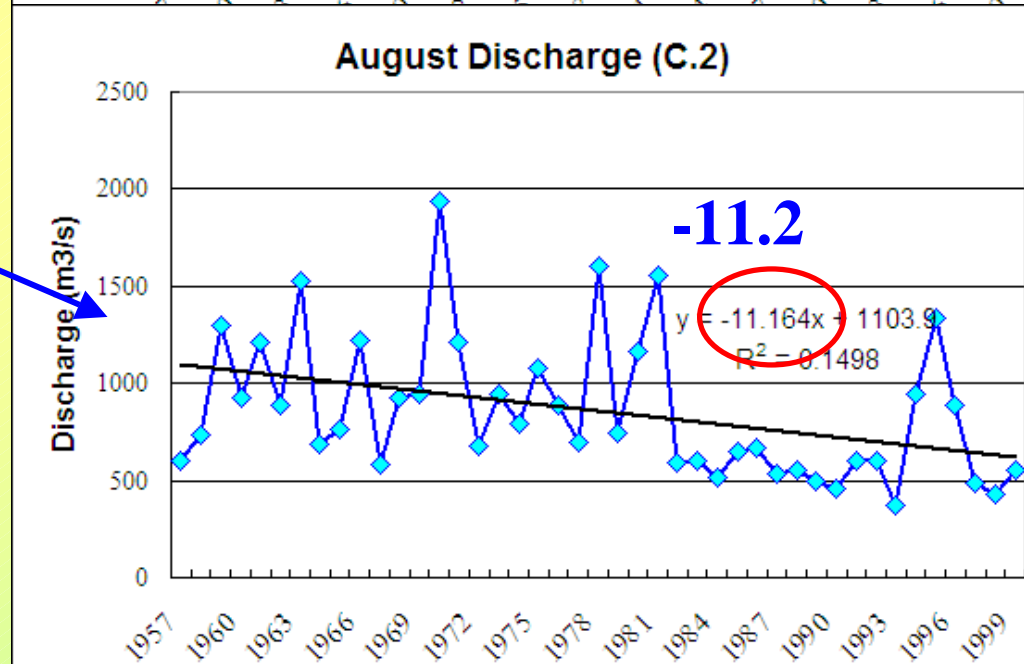
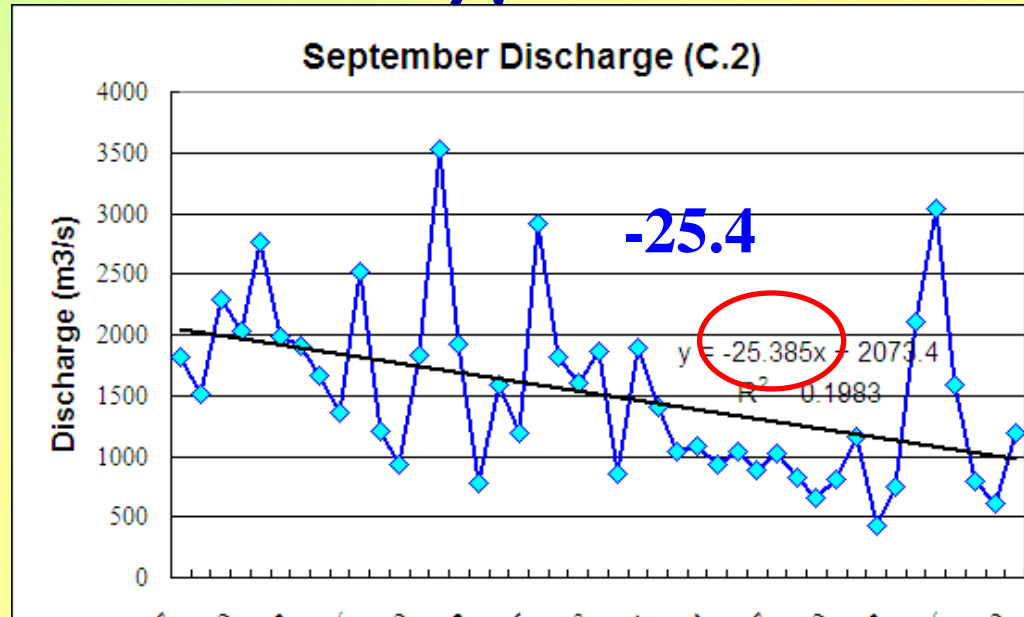
# Trend in Annual Discharge:

- **Decrease in C.2 Annual Discharge esp. 1980's**

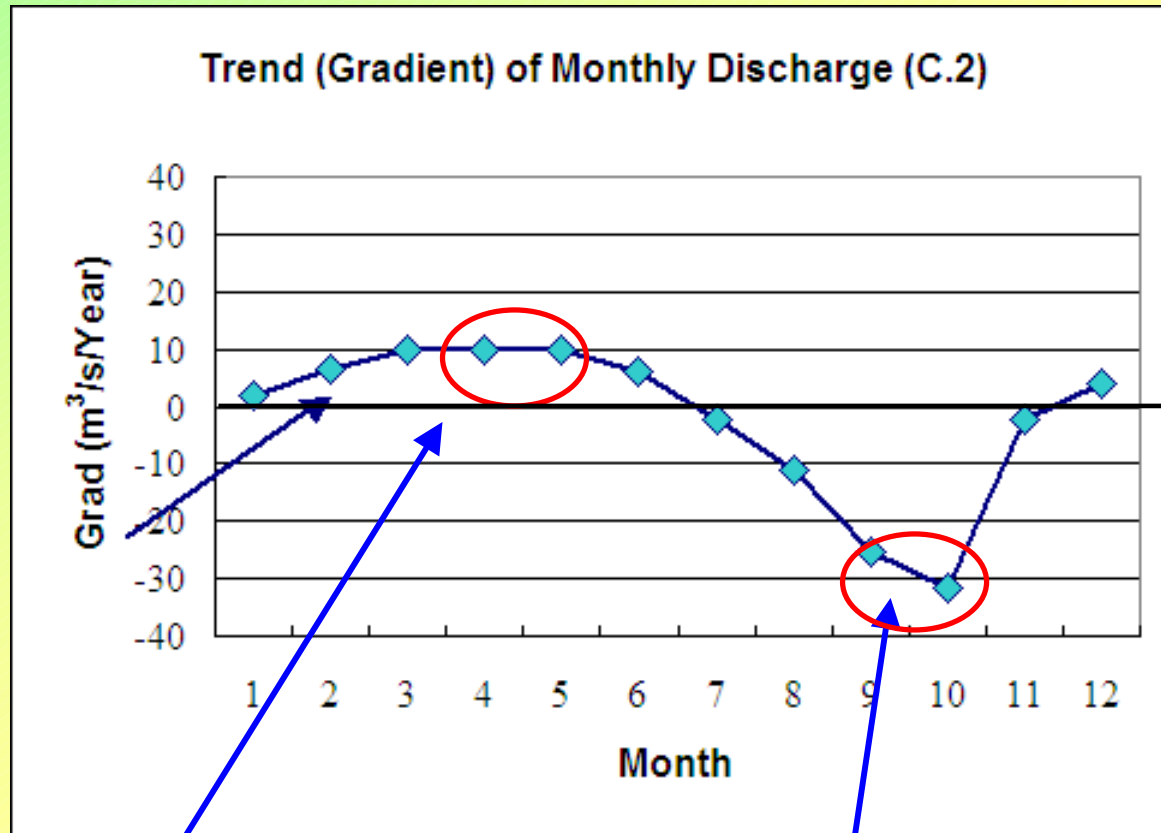


# Trend in Discharge:

- Decrease in September Discharge
- But August Discharge Also Decreases
- Grad. Of Regression?

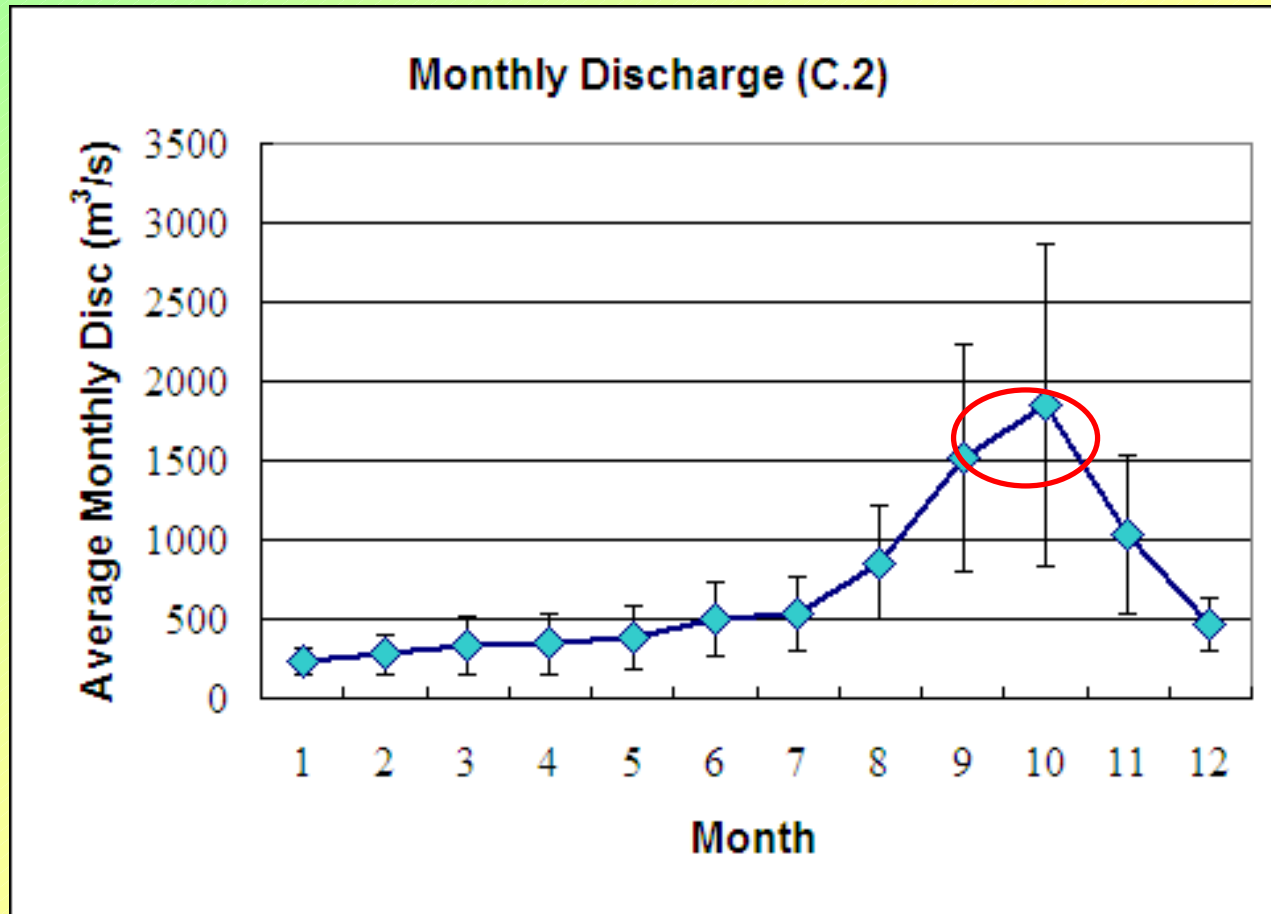


# Trend in Monthly Discharge:



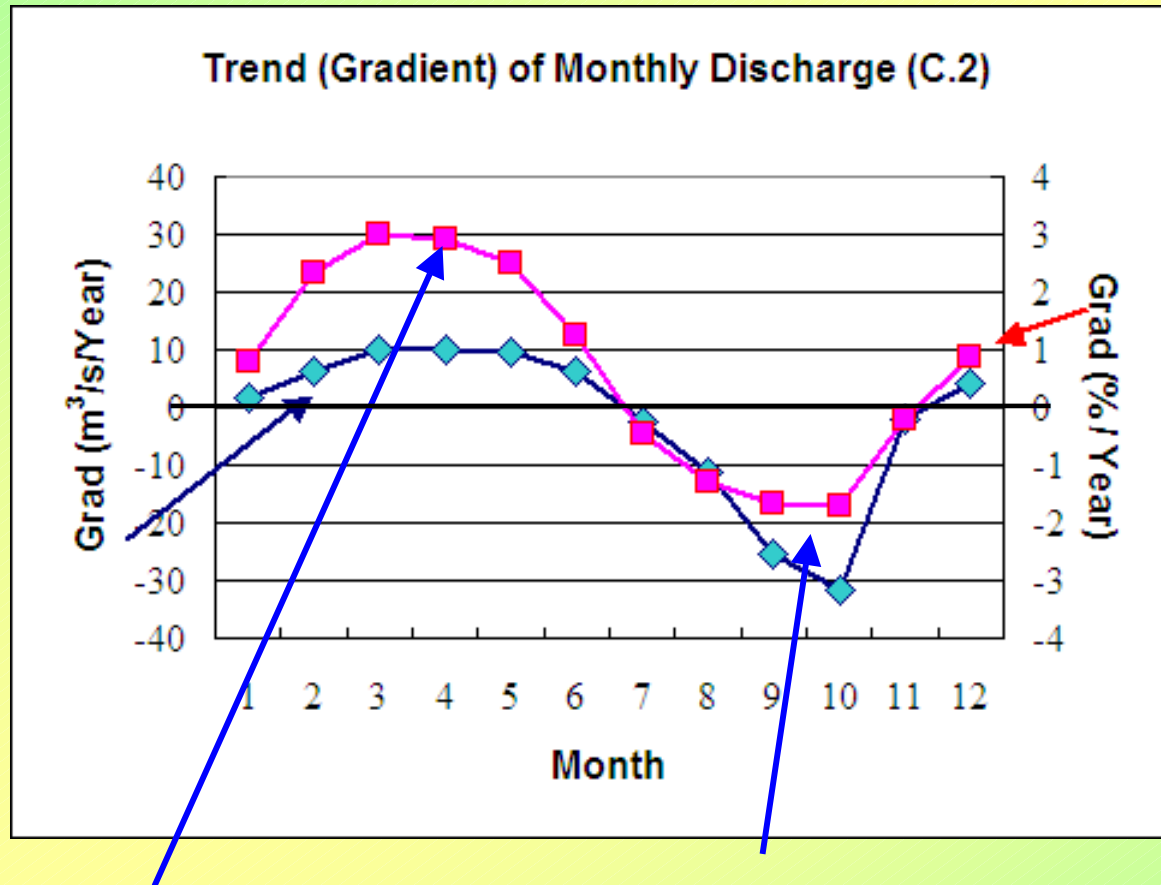
- Increase in Dry Season / Decrease in the end of Rainy Season
  - Compared to Discharge Value?

# Monthly Discharge:



- **Sep/Oct : Large Discharge**
  - Compared to the trend?

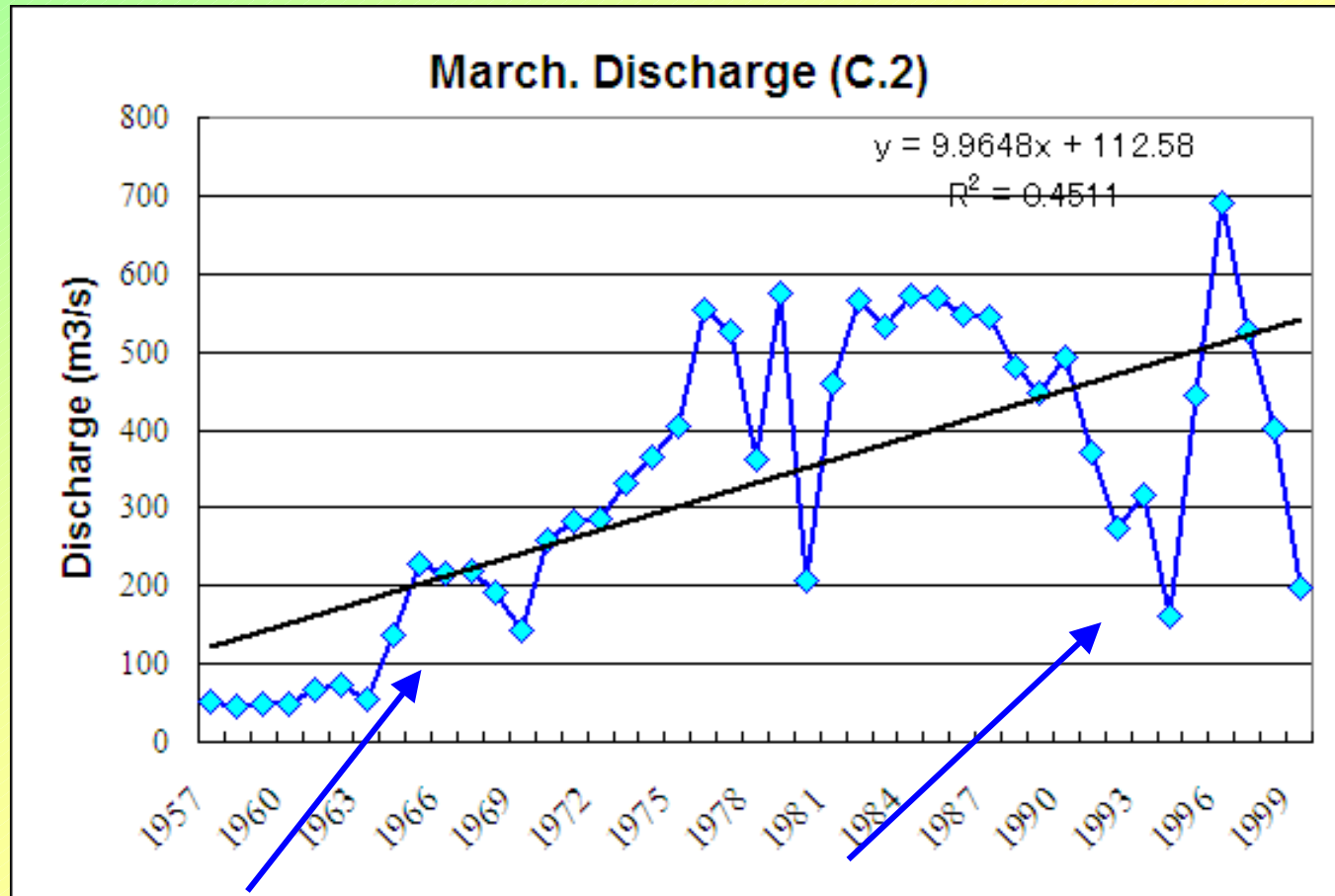
# Trend in Monthly Discharge:



- Increase in Dry Season / Decrease in the end of Rainy Season

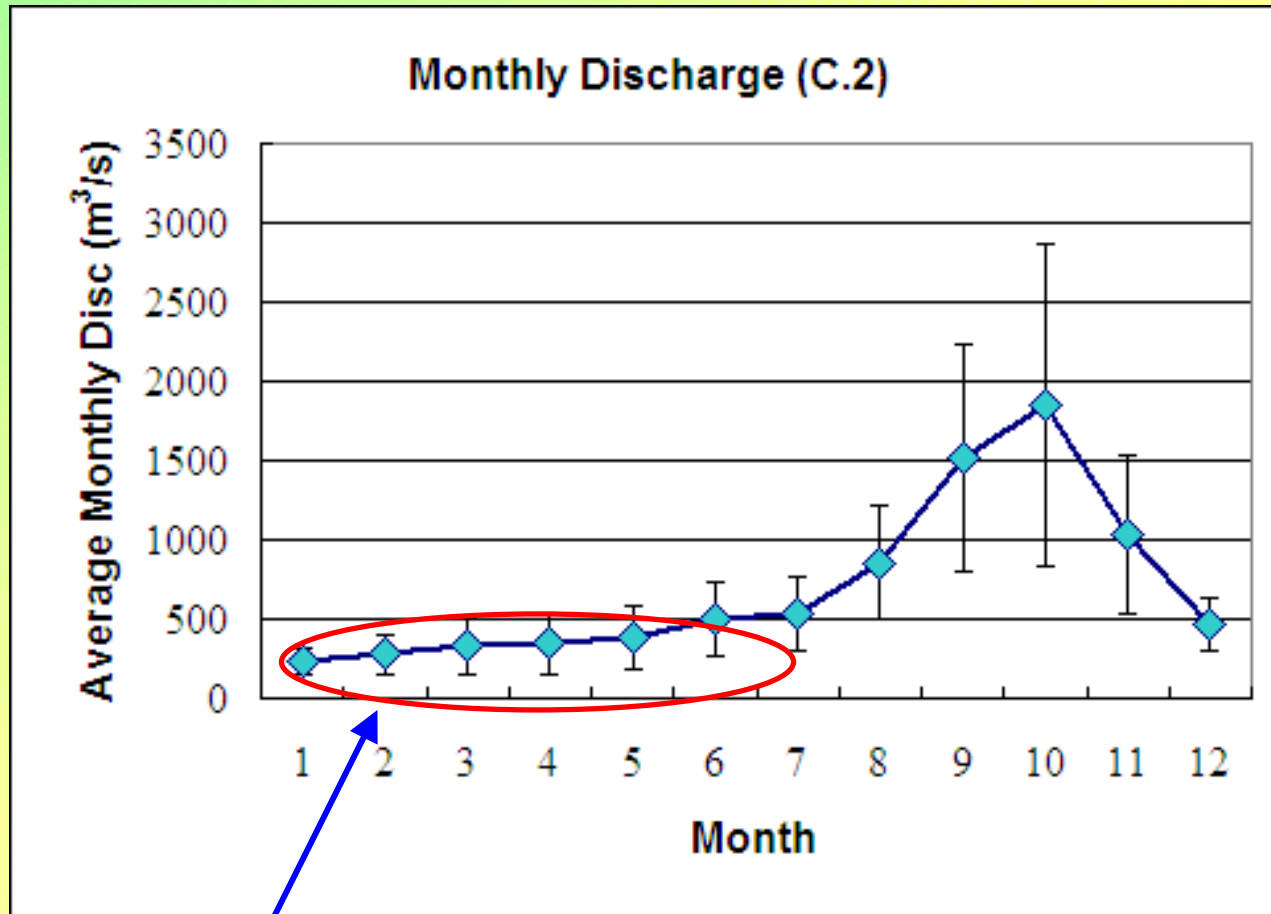


# Trend in March Discharge:



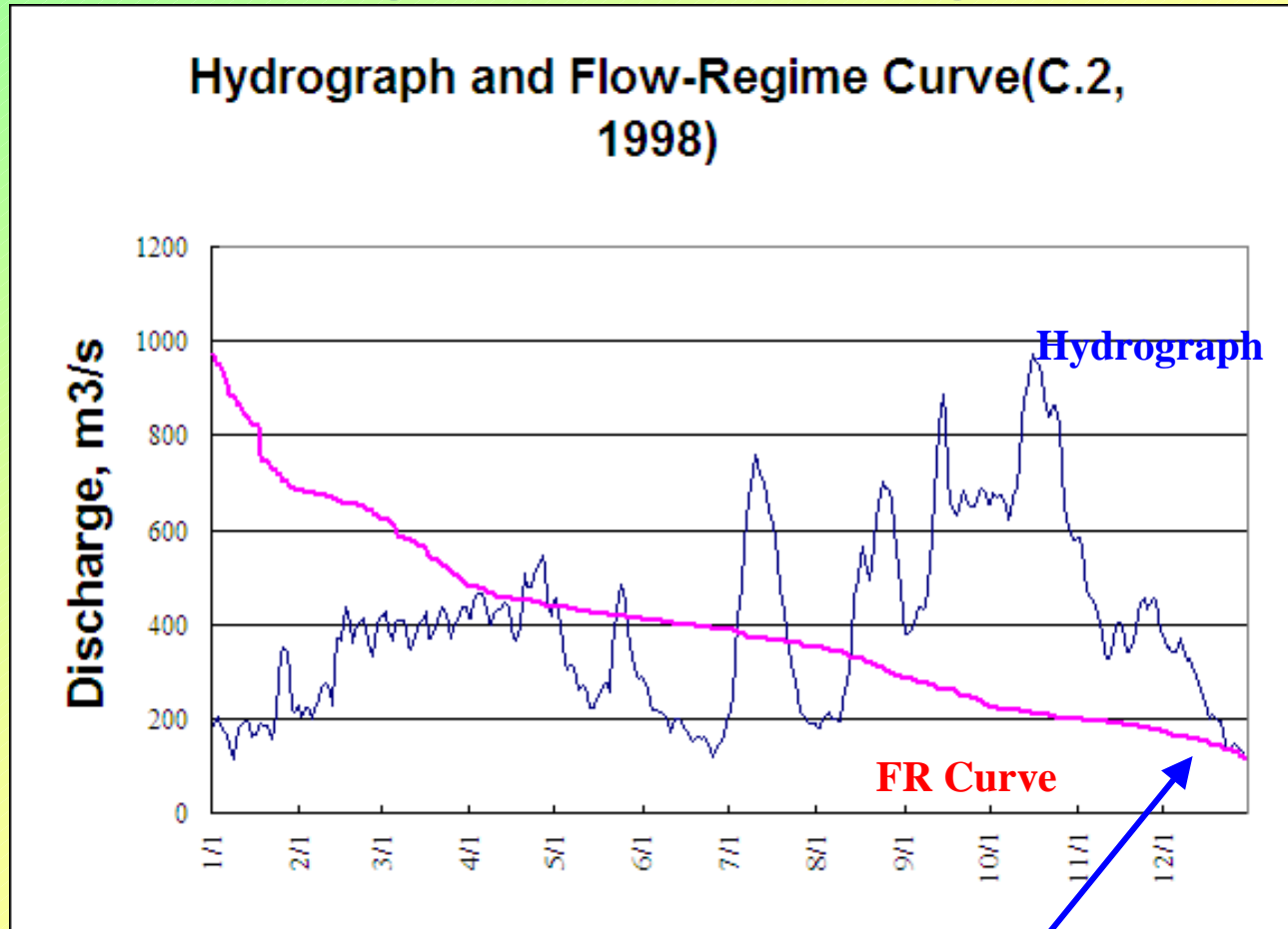
- **Rapid Increase from 1960's**
  - Reservoir Effect?
    - Sometime Severe Condition in 1980's and 1990's

# Monthly Discharge:



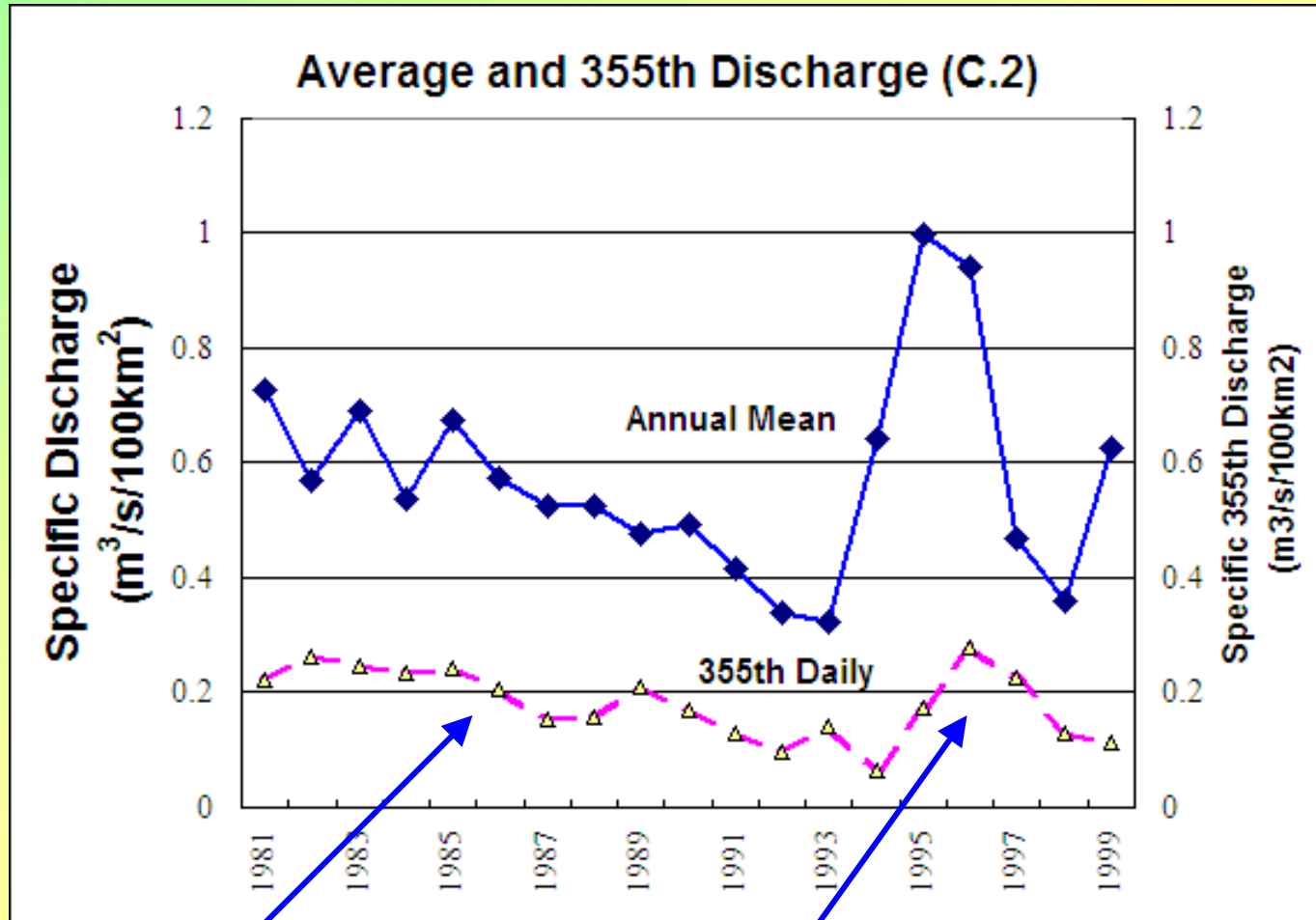
- **Dry Season : Jan-May**
- **How to express drought flow characteristics?**

# Drought discharge index:



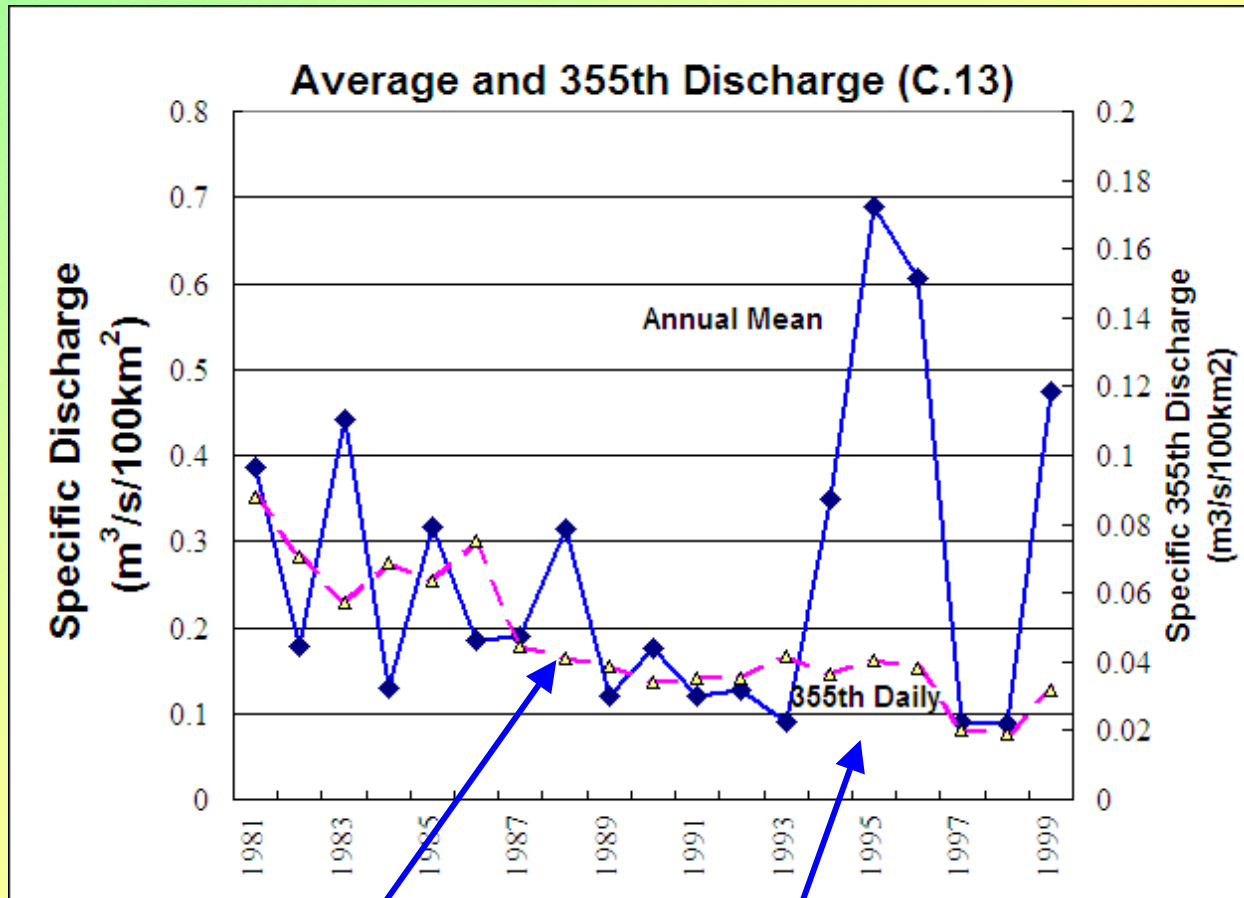
- Index of Drought Period Flow:
  - 355<sup>th</sup> largest daily Discharge in each year

# Drought Discharge: C.2



- Gradual Decrease in 1980's
- Recovery in 1994-96

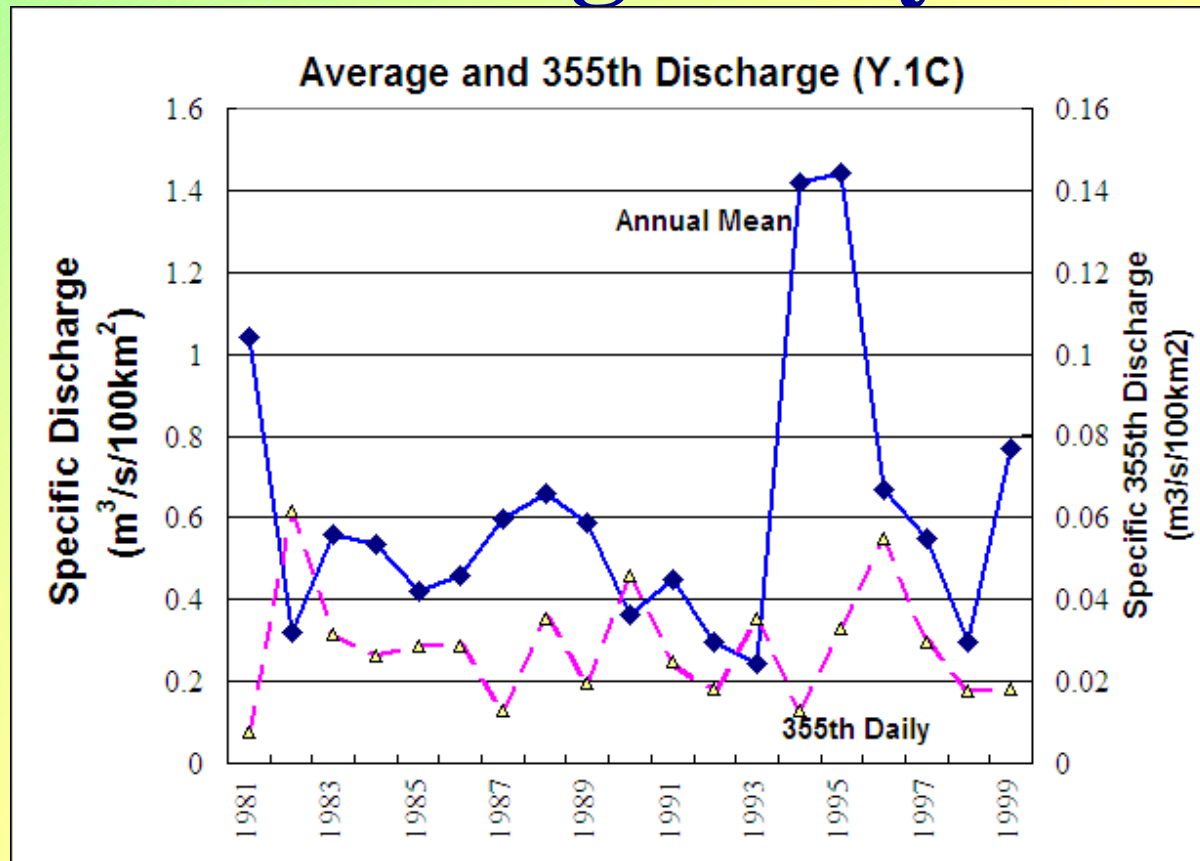
# Drought Discharge: C.13



- “Neighborhood” of C.2
- Gradual Decrease in 1980’s
- No Recovery in 1994-96 Why?



# Drought Discharge: Decreasing Everywhere?



- The Answer is “NO”
- Example of Y.1C (Phatthana Phak)

# **Change in Discharge: Geographical Difference**

- **Long-term datasets reveal something!**
  - From “average” to interannual change
- **Increase/Decrease : Depends on changes in watershed**
- **Where increasing? Where Decreasing?**
  - Annual Mean : Result of Mr. Tebakari, Japan
  - Then, how about drought discharge?

# Role of Datasets...

- **Inspiring our curiosity**
- **Helping us to Find “What is problem” before finding the solution**
- **There IS the dataset. Now is the time for carrying out more application / research / management projects!**

# And More...

- **Got Results by Using GAME-T DB?**
- **Then please inform GAME-T Members and let's share information!**
- **We already have 'Data Archive' and 'Document Archive', then we want 'Result Archive'!**
- **Symposium of Results obtained by using GAME-T DB?**

# Need latest info?

- **GAME-T ML (see hyperlink in the DB)**
  - **Monsoon-ML(English/Thai) :**  
**BY Prof. Hashizume, Chulalongkorn Univ.**  
**Contact [hashmich@geo.sc.chula.ac.th](mailto:hashmich@geo.sc.chula.ac.th)**
  - **GAME-ML(Japanese)**  
**By Univ. of Tokyo**
- **DB Manager : [agata@iis.u-tokyo.ac.jp](mailto:agata@iis.u-tokyo.ac.jp)**
- **Comments (and data files) welcome!**



# Acknowledgement

- **GAME-T DB has been helped by**
  - all who provided us their precious data, including both official agencies in SE Asia countries and GAME-T researchers
  - All who used the DB and gave comments
- **Mirrored DB server in Thailand was installed with NRCT's support. The server is now maintained by NRCT.**

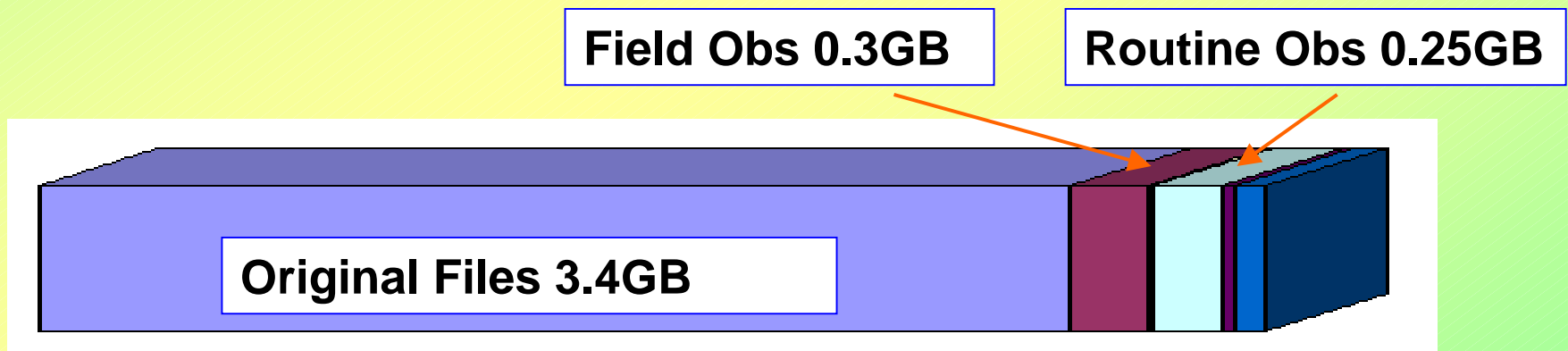
**Terima Kasih!**  
**THANK YOU!**

**ขอบคุณ ครับ**



# Size of Files

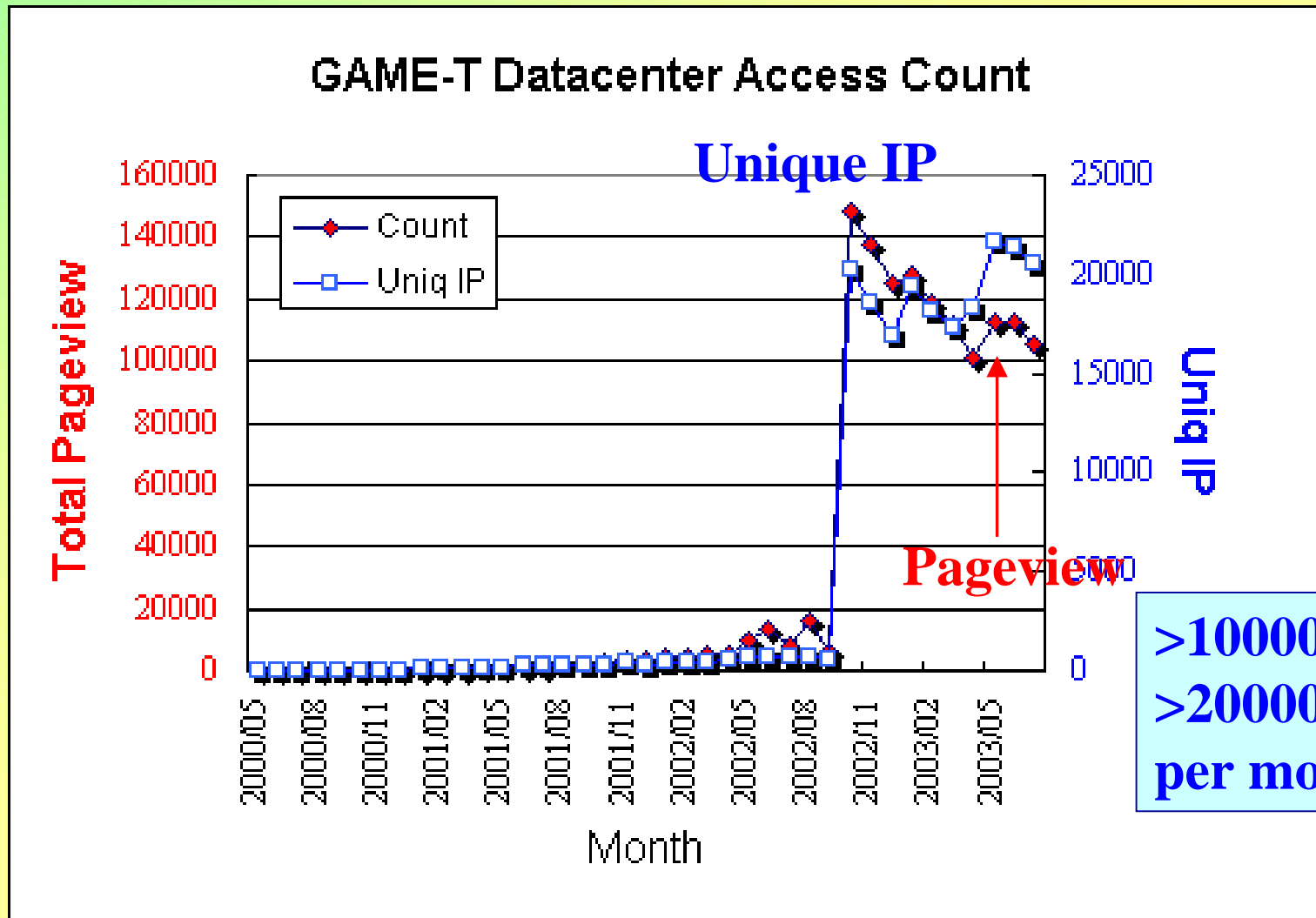
- 3.4GB out of 4.1GB is originally provided files
  - Original files sometimes contain huge data files



**Total : 4.1GB (2002 June) [Now 6GB]**

# Monthly Access Count

- Total Pageview to date=1294915





# Access from Thailand

Max at 2003July  
From PCs in  
Thai=106

GAME-T Datacenter Access Count  
(from Thailand)

