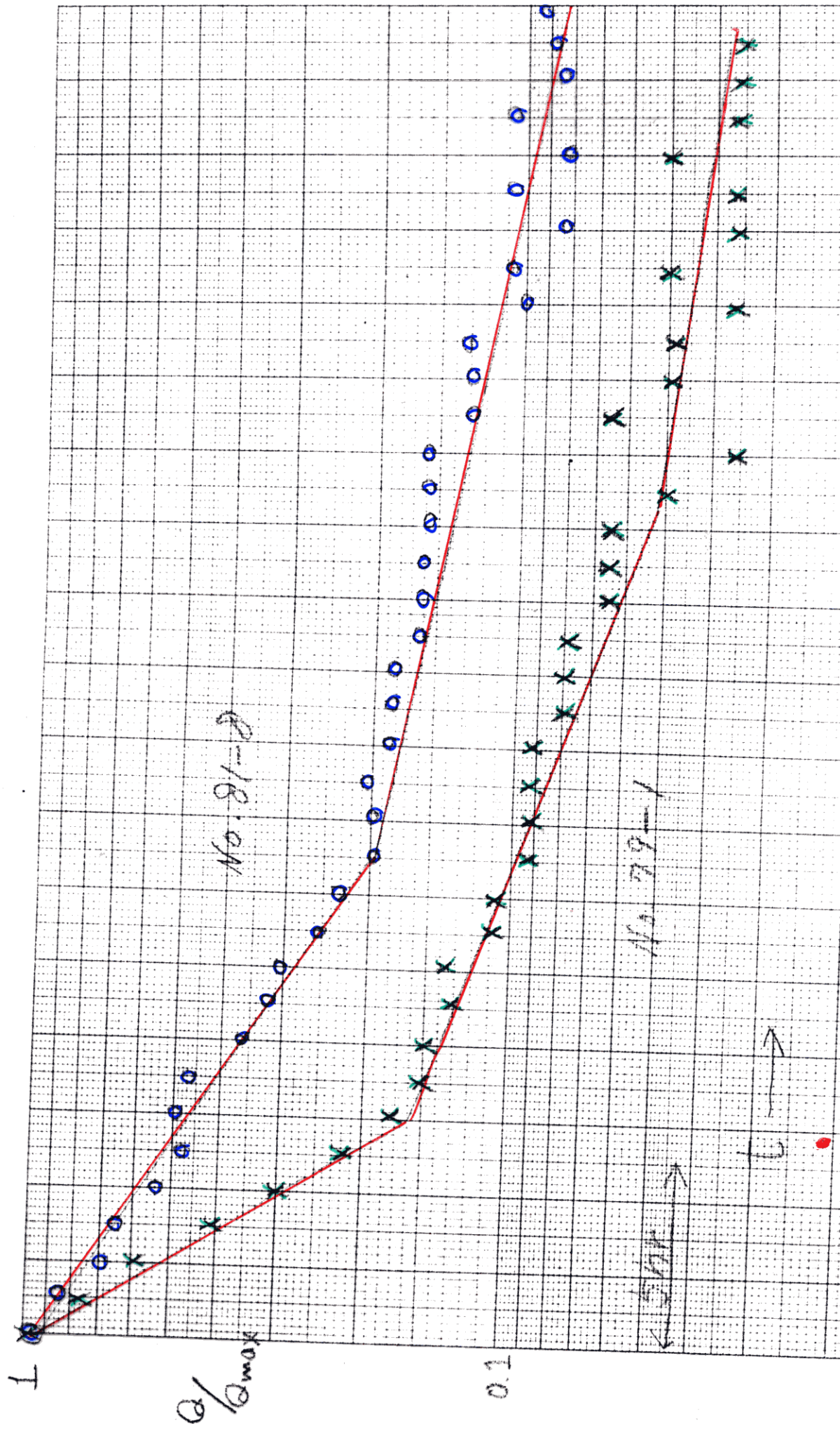
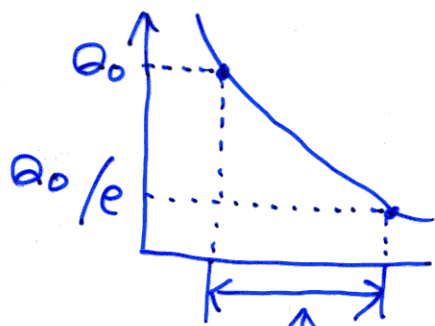


Semi Log

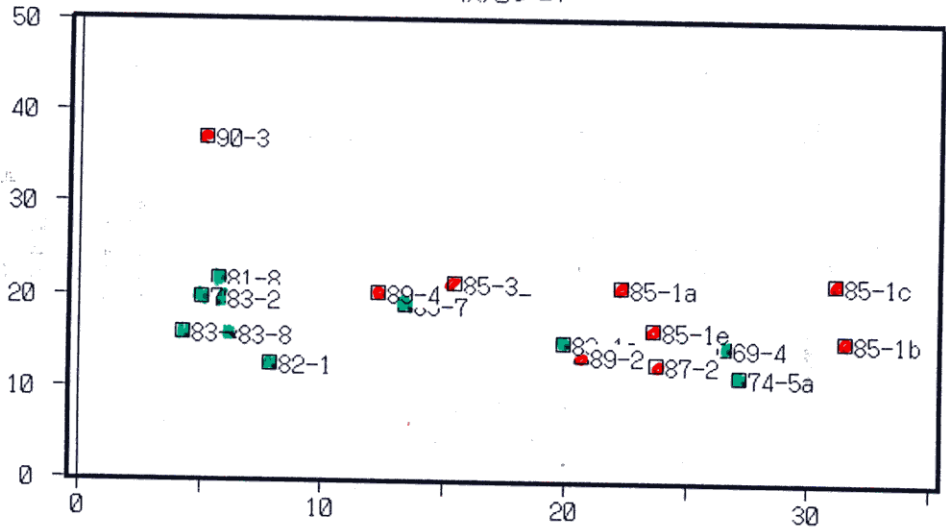




逓減定数 (hr)

最終逓減定数

洪水直前流量と最終逓減定数(Q'b補正後)
牧尾ダム



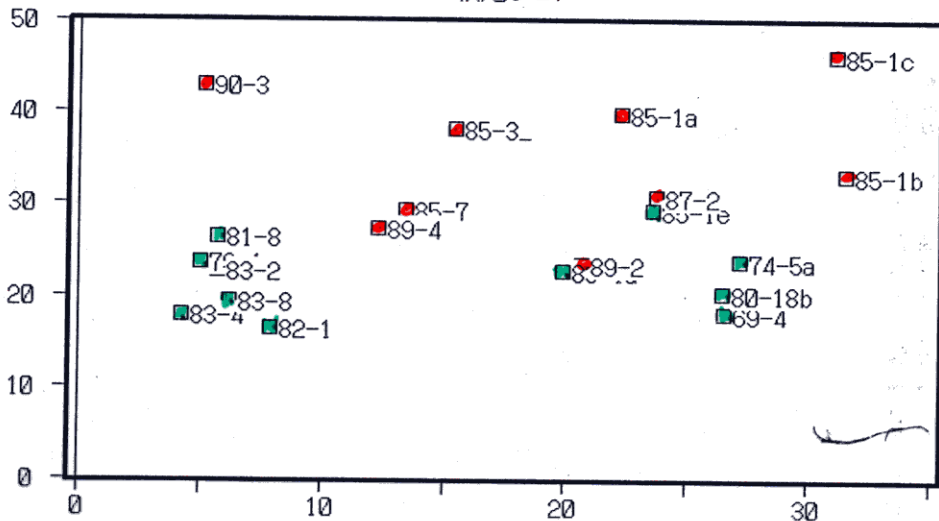
洪水直前流量/毎秒立米

初期流量 (m³/s)

洪水直前流量と最終逓減定数(Q'b補正無し)
牧尾ダム

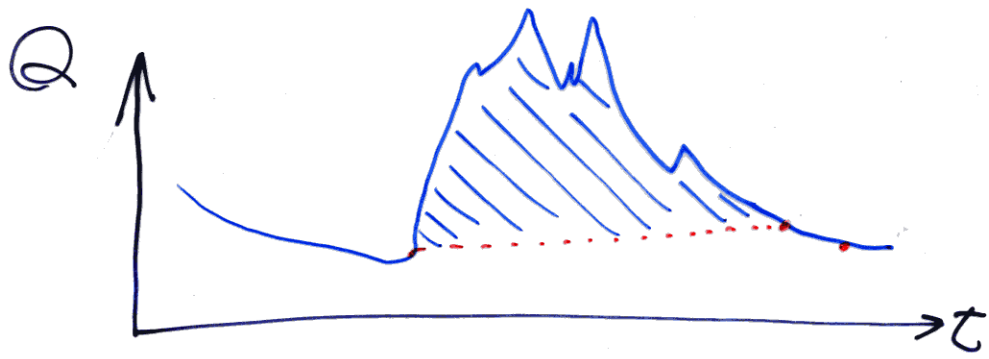
逓減定数 (hr)

最終逓減定数



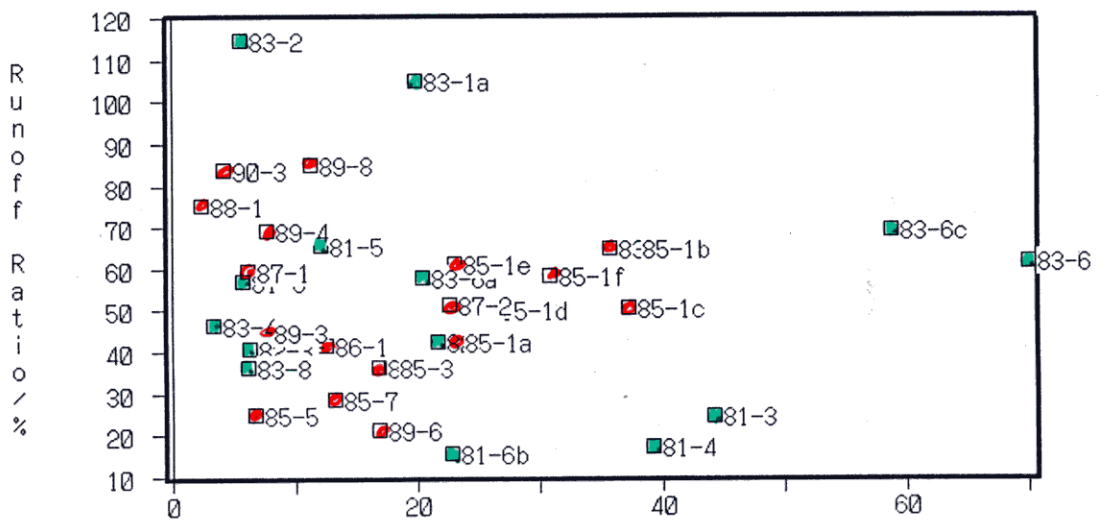
洪水直前流量/毎秒立米

乾湿の指標 ⇒ 初期流量 (m³/s)



Initial Runoff vs Runoff Ratio

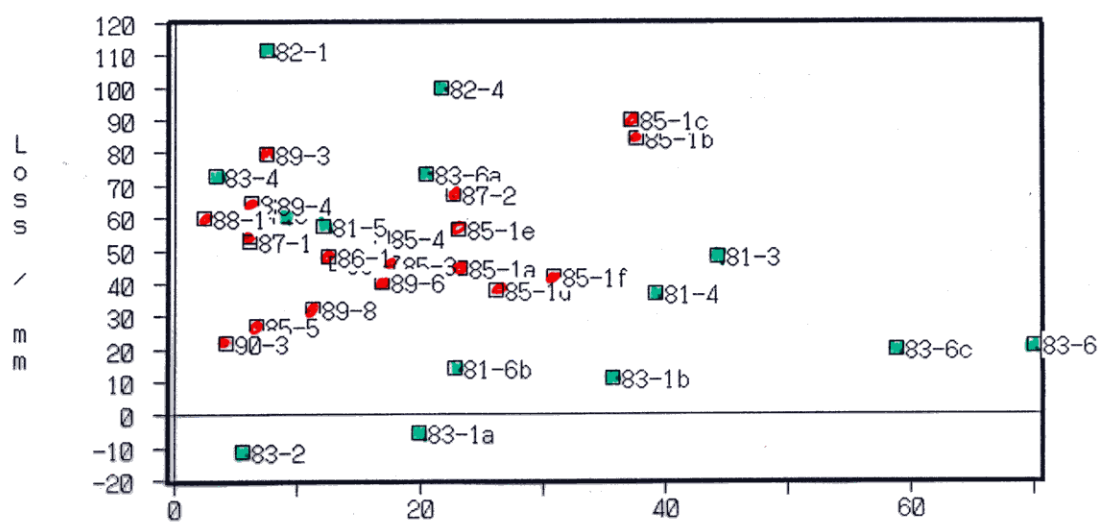
流出率 (%)



初期流量 (m³/s)

Initial Runoff vs Loss

損失高 (mm)



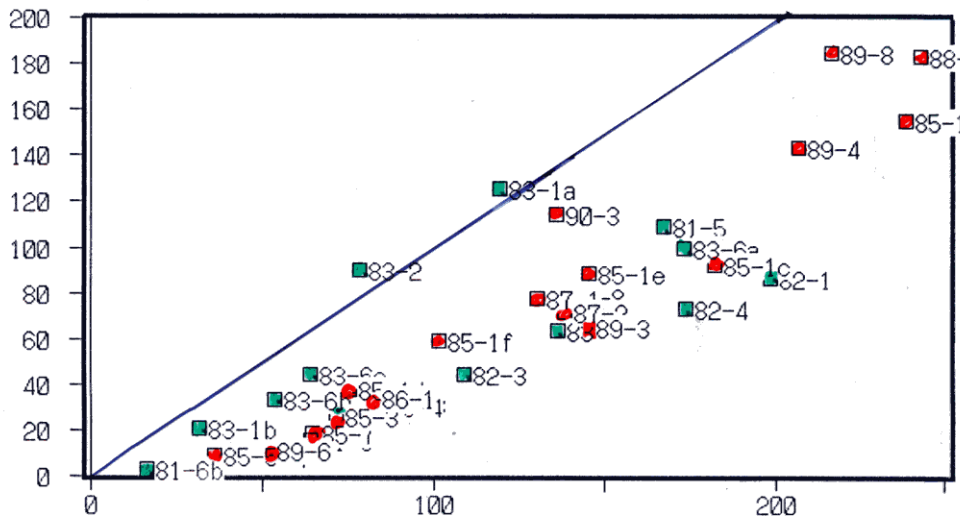
初期流量 (m³/s)

流出高
(mm)

Total Flood Runoff (mm)

■ 「御岳崩水」後
■ 同前

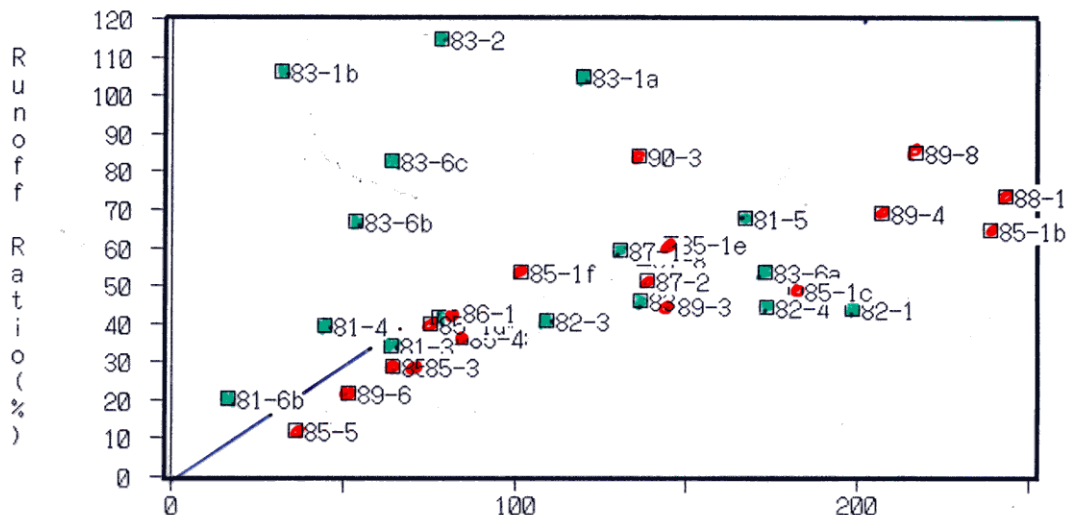
Precipitaion vs. Runoff



Total Precipitation (mm)

総降水量 (mm)
(雨)

Precipitation vs. Runoff Ratio

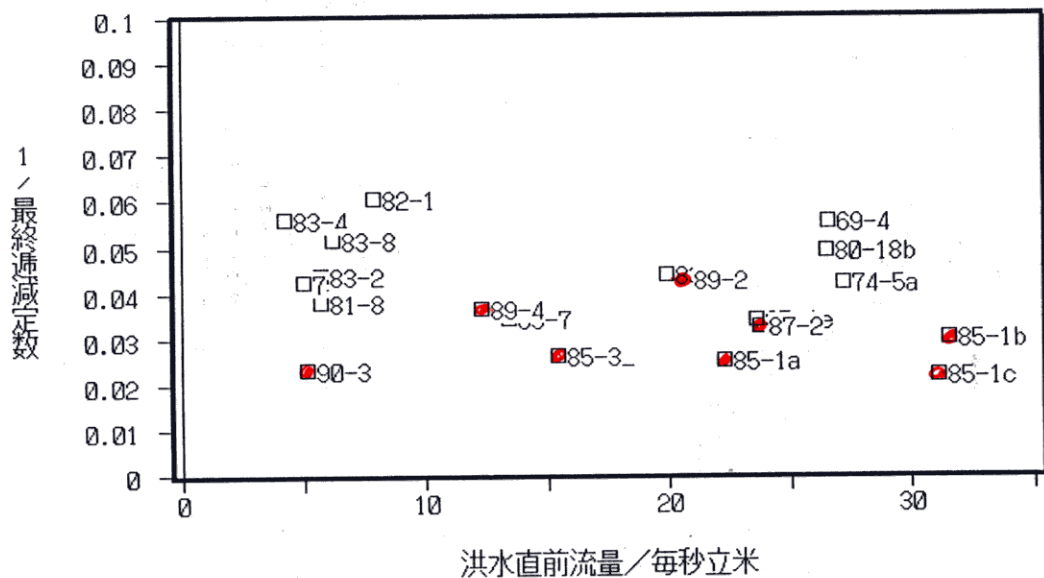


流出率 (%)
Runoff Ratio (%)

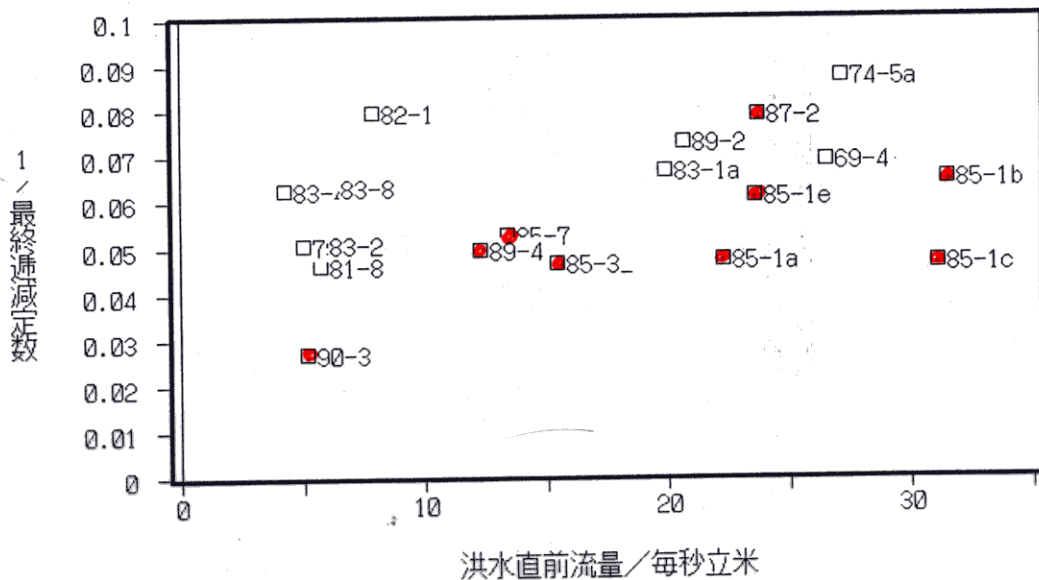
Total Precipitaion (mm)

総降水量 (mm)

直前流量と1/最終逓減定数(Q'b補正無し)
牧尾ダム

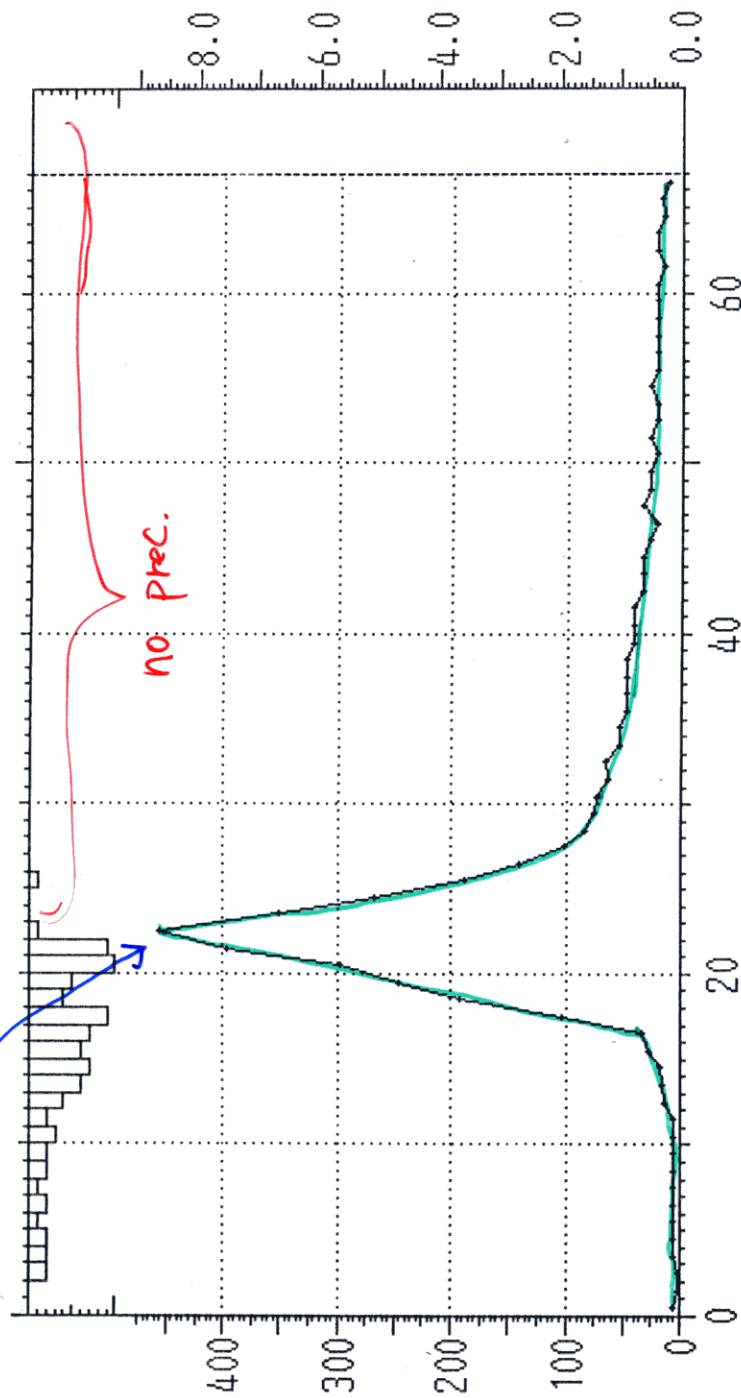


洪水直前流量と1/最終逓減定数(Q'b補正後)
牧尾ダム



79-001.DAT[1/1]
Raw data

Ohtaki R. (at Makio Dam, A=190.2km²)
Duration : 79-05/07 17:00 - 05/10 12:00 , N = 67
Q1: Max = 456.52 m³/s , 8.64 mm/h, Lack = 0
P1: N = 22, Max = 10.0mm, Total = 88.0mm , Ave = 4.00mm



流量
(m³/s)

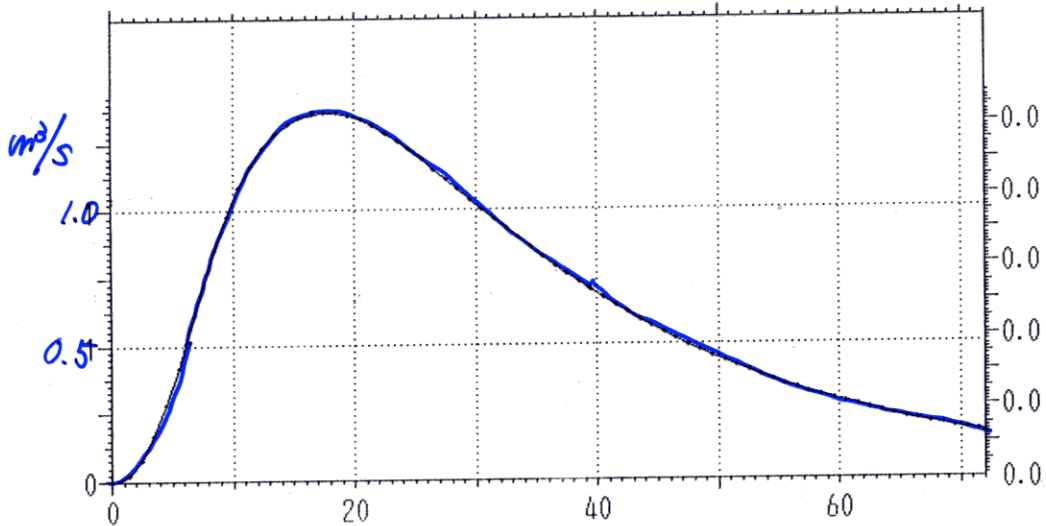
流出高
(mm/h)

時間(hr) →

単位図

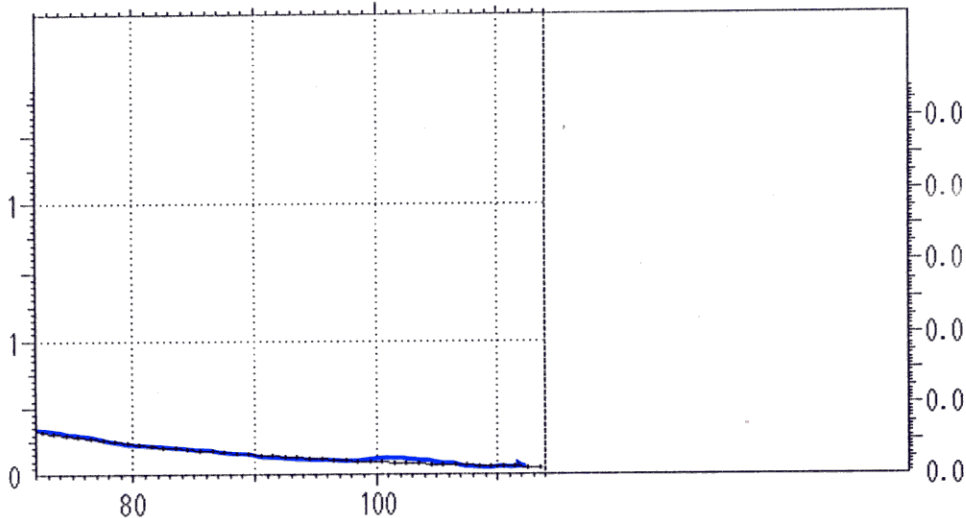
Ohtaki R. (at Makio Dam, A=190.2km²)
Duration : '79 05/07 17:00 - 05/10 12:00 , N = 134
Q1:Max= 1.37m³/s(0.026mm/h,Lack= 0)
P0:N = 0, Max = 0.0mm, Total = 0.0mm , Ave = 0.00mm

79-001.DAT[1/2]
Unit Hydrograph



Ohtaki R. (at Makio Dam, A=190.2km²)
Duration : '79 05/07 17:00 - 05/10 12:00 , N = 134
Q1:Max= 1.37m³/s(0.026mm/h,Lack= 0)
P0:N = 0, Max = 0.0mm, Total = 0.0mm , Ave = 0.00mm

79-001.DAT[2/2]
Unit Hydrograph



Ohtaki R. (at Makio Dam, A=190.2km²)

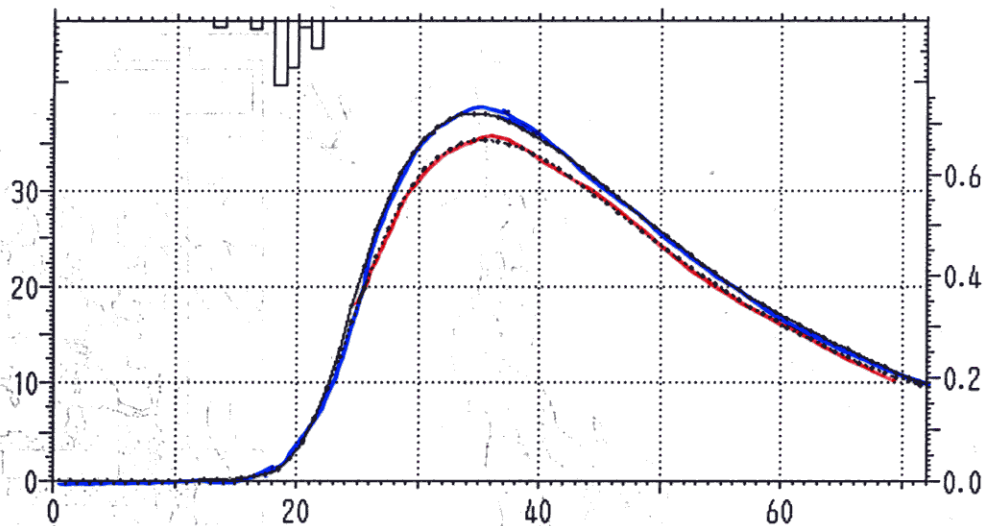
79-001.DAT[1/2]

Duration : '79 05/07 17:00 - 05/10 12:00 , N = 134

ReComputed

Q1:Max= 38.03m³/s(0.720mm/h,Lack= 0) Q2:Max= 35.33m³/s(0.669mm/h,Lack= 0)

P2:N = 9, Max = 10.3mm, Total = 25.9mm , Ave = 2.88mm



Ohtaki R. (at Makio Dam, A=190.2km²)

79-001.DAT[2/2]

Duration : '79 05/07 17:00 - 05/10 12:00 , N = 134

ReComputed

Q1:Max= 38.03m³/s(0.720mm/h,Lack= 0) Q2:Max= 35.33m³/s(0.669mm/h,Lack= 0)

P2:N = 9, Max = 10.3mm, Total = 25.9mm , Ave = 2.88mm

